

MF-7524-U11

High-speed, Flat-bed, 4 needle, Top & Bottom Coverstitch Machine

MF-7524D-U11

Semi-dry-head, Flat-bed, 4 needle, Top & Bottom Coverstitch Machine

This model is best-suited to the process of splicing parts of products such as high-performance sportswear.



sportswear



swimsuit



MF-7524U11D60

Features of the flat-bed, 4-needle, top & bottom coverstitch machine

The flat seamer sews the material while trimming it according to the sewing pattern. To do this, in the preceding process, the material has to be cut with the allowance to be trimmed by the flat seamer included. Sewing of the material exactly according to the sewing pattern is enabled and consistent seam quality is ensured by the use of this model. In addition, material loss which is caused by rough cutting of the material is eliminated. This machine allows the operator to carry out sewing in a posture that is the same as in the case of using a general-purpose sewing machine. This helps reduce the operator's workload.

● Thread path guide

The guide achieves the well-balanced feed of four different threads, thereby contributing to consistent sewing.



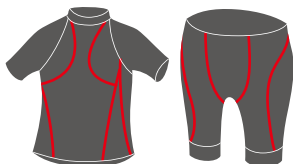
Application	Seam	Model No.	Number of needles	Number of threads	Needle gauge (mm)	Stitch length (mm)	Differential feed ratio	Presser foot lifting amount (mm)	Max. sewing speed (sti/min)
MF-7500-U11 Universal type (basic type)		MF-7524-U11-D52	4	6	5.2	1.6~2.5 (Max 3.6)	1:0.7~1:2	4	4,200*
		MF-7524-U11-D60			6.0				4,200
MF-7500D-U11 Universal type (basic type)		MF-7524D-U11-D60	4	6	6.0	1.6~2.5 (Max 3.6)	1:0.7~1:2	4	4,200

*The maximum sewing speed can be reached when a stitch length is from 1.6mm to 2.5mm.

Processes where the flat-bed sewing machine (MF-7524) and the sewing machine with a feed-off-the arm capability (MF-3620) are used separately in the optimum way depending on different applications

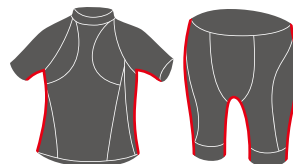
MF-7524U11

◎ Splicing process, etc.



MF-3620 Series

◎ Under-sleeve splicing process, crotch splicing process, etc.



The machine can be used as a standard 3-needle coverstitch machine by changing gauges.

Part number of gauge for the 4-needle machine

Needle gauge	5.2mm	6.0mm
Needle clamp	40064217	40049609
Throat plate	70004684	40049382
Main feed dog	13353701	
Differential-feed dog	13357603	
Presser foot	70004682	40049394
Looper	70004681	40051448

Part number of gauge for the 3-needle coverstitch machine

Needle gauge	3.2mm	4.0mm	4.8mm	5.6mm	6.0mm	6.4mm
Needle clamp	13350004	13350103	13350202	13350301	40062039	13350400
Throat plate	40058587	40058706	40040514	40058033	40062068	40040513
Main feed dog	13354204			13353701		
Differential-feed dog	13358304			13357603		
Presser foot	40090133	40090196	40090197	40082974	40082974	40082974
Looper	13337902					

■ SPECIFICATIONS (U11)

Model name	MF-7524-U11	MF-7524D-U11
Stitch type	4-needle top and bottom covering stitch	
Needle	SM x 1014B (#10S)	
Lift of the presser foot	4mm (with top and bottom covering stitch)	
Stitch pitch adjustment	By dial	
Differential feed adjustment	By micro-adjustment mechanism	
Lubrication	Automatic	Automatic (frame: no lubrication)
Lubricating oil	JUKI Machine Oil 18 (equivalent to ISO VG18)	
Feed dog inclination adjustment	Provided as standard	
Micro-lifter	Provided as standard	
Needle bar stroke converting function	Provided as standard: 31mm: at the time of delivery	
Silicon oil tank for needle tip and needle thread	Provided as standard	
Cartridge oil filter	Provided as standard	
Power requirement	Single-phase 100~120V / 200~240V, 3-phase 200~240V (with automatic thread trimmer)	
Weight of the machine head	45kg (without device)	

*"sti/min" stands for "Stitches per Minute."

■ WHEN YOU PLACE ORDERS

Please note when placing orders, that the model name should be written as follows:

MF-7500

● Without automatic thread trimmer

M F 7 5 2 4 U 1 1 D □ □

Stitch type	Code	Application	Code	Tongue shape of throat plate	Code	Needle gauge	Code
4-needle, top and bottom coverstitch	24	Universal type	U11	D type	D	5.2mm	52
						6.0mm	60


MF-7500D (Semi-dry-head)

● Without automatic thread trimmer

M F 7 5 2 4 D U 1 1 D 6 0

Stitch type	Code	Application	Code	Tongue shape of throat plate	Code	Needle gauge	Code
4-needle, top and bottom coverstitch	24	Universal type	U11	D type	D	6.0mm	60

● To order, please contact your nearest JUKI distributor.

JUKI ECO PRODUCTS	<p>The MF-7524-U11 is an eco-friendly product which complies with JUKI ECO PRODUCTS standards for protecting the environment.</p> <p>● The sewing machine complies with the "Juki Group Green Procurement Guidelines" on the use of hazardous substances, which is stricter than other restrictions, such as those of the RoHS Directive.</p> <p>For details of JUKI ECO PRODUCTS, refer to : http://www.juki.co.jp/eco_e/index.html</p> <p><small>*The RoHS Directive is an EU Directive limiting the use of 6 hazardous substances (lead, hexavalent chromium, mercury, cadmium, PBB and PBDE) in electrical and electronic equipment. The Juki Green Procurement Guideline is the voluntarily established criteria to eliminate not only the aforementioned six substances, but also other ones which also adversely affect the environment.</small></p>
	



Registered Organization : JUKI CORPORATION Head Office
 The Scope of the Registration : The activities of research, development, design, sales, distribution, and maintenance services of industrial sewing machines, household sewing machines and industrial robots, etc., including sales and maintenance services of data entry systems.



2-11-1, TSURUMAKI, TAMA-SHI,
 TOKYO 206-8551, JAPAN
 PHONE : (81) 42-357-2254
 FAX : (81) 42-357-2274
<http://www.juki.com>

JUKI ITALIA S.P.A.
 VIA BERGAMO 4
 20020 LAINATE (MI)
 Tel. 02937579.1
 Fax Off. 0293570164 - Fax ric. 02 93571066
<http://www.juki.it>

* Specifications and appearance are subject to change without prior notice for improvement.
 * Read the instruction manual before putting the machine into service to ensure safety.
 * This catalogue prints with environment-friendly soyink on recycle paper.