

# LBH-1790ANB

Computer-controlled, High-speed, Buttonholing Sewing System  
(Shorter-thread remaining functions)

## JUKI's digital Sewing System



LBH-1790ANB

The LBH-1790ANB Series follows the world's highest sewing speed and dry-head mechanism of its predecessor model. In addition, this machine comes with the latest model operation panel which is installed with a USB port. Furthermore, all drive mechanisms have been digitalized to manage each sewing pattern individually. The maximum sewing speed is 4,200sti/min., and the jump speed is 200mm/s. The cycle time has been further reduced for continuous sewing.

### Management of sewing performance and sewing machine by the utilization of IoT (Internet of Things)

Management, browsing and editing of data can be carried out on the application software

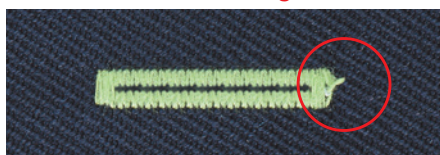
Data on sewing machine adjustments made according to the product to be sewn can be transferred to a commercially-available Android tablet in contactless mode. This enables quick check for uniform settings as well as confirmation of conditions of sewing machines in a sewing line, thereby facilitating setup changes. The operation panel is also provided as standard with a USB port. Data management and software update can be carried out with ease using a USB thumb drive.



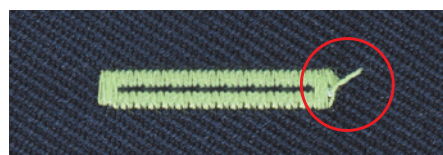
### The length of remaining bobbin thread becomes shorter, less than 2.5mm on average.

The newly-developed shorter-thread remaining mechanism trims the thread short and eliminates the trouble of manual thread nipping.

Shorter-thread remaining functions



Conventional Buttonholing Machine



\* Remaining length of thread varies with sewing conditions.

## ■ SPECIFICATIONS

Model name	LBH-1790ANB
Sewing speed	Max. 4,200sti/min, Normal 3,600sti/min
Needle bar stroke	34.6mm
Size of cloth cutting knife	6.4~22.2mm (1/4"~7/8")
Bartacking width	Max. 4.0mm
Buttonhole length	Max. 25mm
Precision of needle throwing mechanism	0.05mm
Needle thread tension	Active tension (electronic thread tension control system)
Number of stitches	Automatically computed from the size of the buttonhole and stitch pitch
Needle (at the time of delivery)	DP×5 (#11J) #11J~#14J
Hook	DP type, full-rotary hook

\* "sti/min" stands for "Stitches per Minute"

\* The special-specification part is available on a special order. Contact our branch or office in your area.

\* CompactFlash® or CFA specification compatible media.

\* "CompactFlash®" is a registered trademark of SanDisk Corporation, U.S.A.

\* Other company names and product names/brand names are trademarks or registered trademarks of the respective companies.

**JUKI**  
**JUKI CORPORATION**  
 SEWING MACHINERY & SYSTEMS BUSINESS UNIT

2-11-1, TSURUMAKI, TAMA-SHI,  
 TOKYO 206-8551, JAPAN  
 PHONE : (81) 42-357-2370  
 FAX : (81) 42-357-2274  
<http://www.juki.com>

\* Specifications and appearance are subject to change without prior notice for improvement.  
 \* Read the instruction manual before putting the machine into service to ensure safety.  
 \* This catalogue prints with environment-friendly soyink on recycle paper.

