



# Bonding Seam Sealing & Welding Machines

# CONTENTS

Catalogue of each model is also available. For further details, please refer to the individual machine catalogue.

|                                    |    |  |    |
|------------------------------------|----|--|----|
| <b>TAPE BONDING / SEAM SEALING</b> |    |  |    |
| JEUX-AI-001                        | 10 | JEUX-CS-671                                | 44 |
| JEUX-AI-101-IRJ                    | 11 | JEUX-CS-672                                | 45 |
| JEUX-AI-107                        | 12 | JEUX-CS-673                                | 46 |
| JEUX-AI-118                        | 13 | JEUX-CS-674                                | 47 |
| Selection Guide for JEUX-AI-Series | 14 | JEUX-CS-675                                | 48 |
| JEUX-SF-816                        | 17 | JEUX-CS-676                                | 49 |
| JEUX-SF-829                        | 18 | JEUX-CS-677                                | 50 |
| JEUX-SF-828                        | 19 | JEUX-CS-678                                | 51 |
| LHP-PP1-N                          | 20 | JEUX-CS-679                                | 52 |
| QHP-A05                            | 21 | JEUX-CS-680                                | 53 |
| QHP-A08                            | 22 | JEUX-CS-681                                | 54 |
|                                    |    | JEUX-CS-682                                | 55 |
| <b>ULTRASONIC WELDING</b>          |    | JEUX-CS-683                                | 56 |
| JEUX-7510                          | 24 | JEUX-CS-686                                | 57 |
| JEUX-US-511                        | 25 | JEUX-CS-687                                | 58 |
| JEUX-US-512                        | 26 | JEUX-CS-688                                | 59 |
| LWU-3015-4BT                       | 27 | JEUX-CS-693                                | 60 |
|                                    |    | JEUX-CS-694                                | 61 |
| <b>HEAT PRESSING</b>               |    | JEUX-CS-695                                | 62 |
| JEUX-CS-651                        | 29 | JEUX-CS-696                                | 63 |
| JEUX-CS-652                        | 30 | JEUX-CS-697                                | 64 |
| JEUX-CS-653                        | 31 | JEUX-CS-698                                | 65 |
| JEUX-CS-654                        | 32 | JEUX-CS-700                                | 66 |
| JEUX-CS-655                        | 33 | JEUX-CS-701                                | 67 |
| JEUX-CS-658                        | 34 | JEUX-CS-702                                | 68 |
| JEUX-CS-661                        | 35 | JEUX-CS-703                                | 69 |
| JEUX-CS-662                        | 36 | JEUX-CS-704                                | 70 |
| JEUX-CS-663                        | 37 | Selection Guide for Heat Pressing Machines | 71 |
| JEUX-CS-664                        | 38 | <b>TESTING MACHINES</b>                    |    |
| JEUX-CS-665                        | 39 | JEUX-HT-309                                | 75 |
| JEUX-CS-666                        | 40 | JEUX-HT-360                                | 76 |
| JEUX-CS-667                        | 41 | JEUX-TD-100                                | 77 |
| JEUX-CS-668                        | 42 | JEUX-TD-200                                | 77 |
| JEUX-CS-669                        | 43 | Optional Items                             | 78 |





Juki Central Europe (JCE), a subsidiary of Juki Corporation, was established in 2005 as the official body coordinating sales and logistics across twenty European countries as well as Russia, North Africa and Turkey. From the company offices in Warsaw, Poland; sales, marketing, logistics and technical support services are coordinated for the entire extended European market-place. The company's strengths are leveraged through an extensive distributor network that has been established over the years, offering the shared knowledge and expertise of industry leading experts in the sewing sector.

Juki Central Europe's different office in Moscow, Minsk and Turkey, as well as Juki Italia S.p.A, again add to our extensive network supporting and maintaining the Juki brand across the continent and beyond.

Juki offers an extensive line of industrial sewing machines for the apparel industry – ranging from Lockstitch, Overlock and Coverstitch machines, to electronic bartackers and automated sewing systems. Our machines have also become renowned in the non-apparel sector, supplying such industries as automotive, upholstery, marine, industrial fabrics, footwear, leather products and home textiles.

Software solutions such as **JaNets (Juki Advanced Network Systems)** is the next frontier of sewing innovation and aims to bring your production into the future with interlinked machines and data to make analytical decisions.

As well as our extensive range of high quality industrial sewing machines **Juki** produce machines for the semi-professional and home-use market with our home sewers and surgeons establishing themselves as some of the most popular and reliable in the market.

We are very proud of our historically strong distribution network across Europe and throughout the rest of the world. From **Juki Central Europe's offices in Warsaw** and through our representative offices we are able to serve the entire extended European market and North Africa. Through our carefully selected distributors we are able to combine knowledge and specific geographical market experience to ensure the best sewing solutions are available to

customers. Leveraging both our own expertise as well as that of our distributors we are able to provide insights and assistance that can improve end users productivity and quality.

Here in **Juki Central Europe** we constantly have one eye on the future and are looking to improve not only our own business but that of our customers and anyone who uses a **Juki** sewing machine. Our products are developed and manufactured with a consumer viewpoint in-mind at all times and it is our goal to build strong, lasting customer relationships. We will continue to provide products and services by taking our customers' needs and desires into account, by treating our customers as partners, through which we will create value together.

**Juki** was founded in 1938 when nearly 900 independent machinery manufactures came together to form the "TOKYO JUKI MANUFACTURERS ASSOCIATION". It wasn't until 1943 that this association was reorganized into a joint stock corporation. In this time Juki focused on other production types but in 1947 we produced our first sewing machine for the household market. This was followed by the first Juki industrial sewing machine in 1953 and decades of industry dominance thereafter. Juki has been at the forefront of sewing machine innovation over its lifetime with many of our advancements being adopted industry wide. To name just a few of our more famous improvements: the single-axis rotational thread take-up (1957), automatic Thread Trimmer (1969), pick-and-placer (1987), automatic bobbin thread feeder (1997), multifunctional machine digitalization (2015). This is just one milestone for Juki and we look forward to continuing our journey far into the future.

## JUKI NON-SEWING LABORATORY



## JUKI CENTRAL EUROPE WOULD LIKE TO INVITE YOU TO OUR NEW NON-SEWING SHOW ROOM!

**The specialized showroom is a one-stop shop for all the new bonding, welding, press and industrial printing machines Juki Central Europe is now able to offer.**

Now that the full range of solutions set up and available to use **in one place** it is the perfect place for you to test out the machines and see what they can do to give an edge to your production process. We have our resident experts on hand to provide detailed explanation and training you can be sure that a visit will be as valuable as possible. With these solutions testing your materials is key and we are able to perform these tests ahead of time again ensuring you will get the most out of your visit.



# WHAT IS A SMART FACTORY?

IT IS VISUALISED

IT IS CONNECTED



Factory management



Production Line Control



Operator Motivation



Connected Supply Chain



Connected factory



Connected Sewing Line

## JUKI SOLUTIONS

### 01 AUTOMATIZATION



Robot Sewing System

### 02 DIGITALIZATION



Digital Control

### 03 NETWORKING



Production Data Collection



Automatic Guided Vehicle



Two-way Communication



# INTRO

Depending on the function and process required by a factory there are different methods of bonding that achieve different results or seams. This technology can be used as a replacement for traditional stitches (attaching fabric to fabric) but also to improve normal stitched seams strength and durability (sealing).

Creation of seams is carried out by a number of different methods but in all processes one piece of fabric is fused to another piece. Sealing of seams uses special tape applied over an existing seam (either stitched or bonded) to make it stronger or waterproof.



## Tape Bonding / Seam Sealing

The hot air activates the adhesive of the specialized bonding tape fusing the tape to the fabric. Tape can also be applied on top of normal stitched seams to make them waterproof and more durable.



JEUX AI-107 spec A-NNN



## Ultrasonic Welding

Ultrasonic vibration causes the material to heat up and fuse together. A ultrasonic vibration from the horn causes mechanical stress within the materials that release thermal energy softening the points of contact and bonding the material together. Bonding only takes place at the points of contact between the horn and anvil. Polyester, nylon, polypropylene, polyethylene, PVC, urethane, saran, EVA, and surlyn can all be bonded ultrasonically.

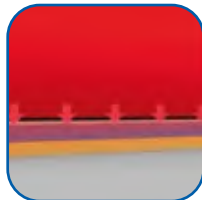


JEUX US-511



## Press Bonding

This uses both a hot and a separate cold plate to create a bond; it is capable of being used to fuse fabric to fabric (attaching) or with join with tape (sealing). Firstly the hot plate is applied to the product and pressure and heat are exerted. This causes the fabric to fuse or bond together (if tape is being used it melts). Secondly the cold plate is applied and this exerts even more pressure on the now melted seam and cools it simultaneously solidifying the bond.



JEUX CS-694



**TAPE BONDING / SEAM SEALING**



## JEUX AI-001

Post-Bed, Seam Sealing Machine, with Differential Speed, Memory Function and 3D Electronic Nozzle Positioning System

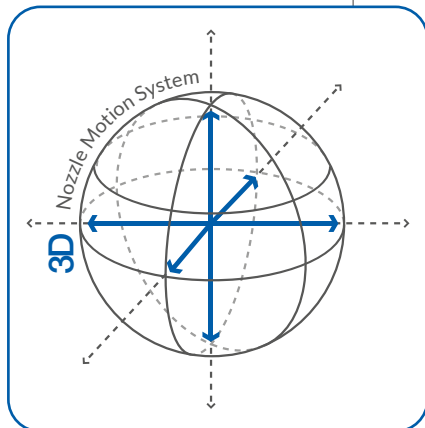
- Stretch fabric ready
- Narrow tape read
- Software upgradable, different post-type specifications available

### KEY FEATURES

- 3D Electronic nozzle positioning system
- Differential speed top / bottom roller
- Variable speed seam sealing
- Digital tensioning device
- Multi-language support
- Data memory bank

| Model name            | JEUX AI-001                  |
|-----------------------|------------------------------|
| Power Supply          | AC 220 V, 50/60 Hz, 1⌀       |
| Power Consumption     | 3600 W                       |
| Compressed Air        | > 0.4 MPa                    |
| Maximum Sealing Speed | 18 m/min                     |
| Maximum Temperature   | 800°C                        |
| Nozzle Unit           | 22 mm                        |
| Upper Roller Width    | 25.4 mm                      |
| Lower Roller Width    | 31 mm                        |
| Dimensions            | 1200 x 750 x 1800 mm (LxWxH) |
| Net Weight            | 150 kg                       |
| Optional Roller       | 8-30 mm                      |

Possible specifications: A, C, D, E, F, G, H, I  
\*For ordering options please see page 15



3D Nozzle Positioning



JEUX AI-001 spec A-NNN

## JEUX AI-101-IRJ

Post-Bed, Seam Sealing Machine with Differential Speed, Memory Function, 3D Electronic Nozzle Positioning System and Tape Heating Temperature Controller

- Stretch fabric ready
- Narrow tape ready
- Software upgradable
- Different post-type specifications available

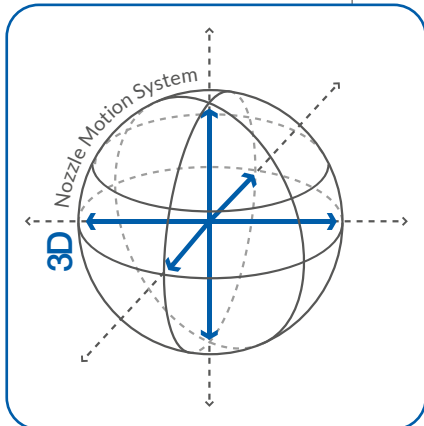
### KEY FEATURES

- 3D electronic nozzle positioning system
- Tape heating temperature sensor
- Differential speed top / bottom roller
- Variable speed seam sealing
- Color touch screen interface
- Digital tensioning device
- Multi-language software

| Model name            | JEUX AI-101-IRJ              |
|-----------------------|------------------------------|
| Power Supply          | AC 220 V, 50/60 Hz, 1Φ       |
| Heat Power            | 3600 W                       |
| Compressed Air        | > 0.4 MPa                    |
| Maximum Sealing Speed | 18 m/min                     |
| Maximum Temperature   | 800°C                        |
| Nozzle Unit           | 22 mm                        |
| Upper Roller Width    | 25.4 mm                      |
| Lower Roller Width    | 31 mm                        |
| Dimensions            | 1200 x 750 x 1800 mm (LxWxH) |
| Net Weight            | 160 kg                       |
| Optional Roller       | 8-30 mm                      |

Possible specifications: A, B, I

\*For ordering options please see page 15



3D Nozzle Positioning



JEUX AI-101

# TAPE BONDING / SEAM SEALING

## JEUX AI-107

Post-Bed, Seam Sealing Machine with Differential Speed and Memory Function

- Stretch fabric ready
- Narrow tape ready
- Good for 3-layer taping
- Software upgradable

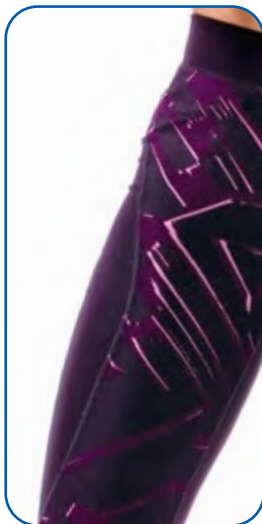
### Key features

- Differential speed top / bottom roller
- Colour touch screen interface
- Digital tensioning device
- Duplex nozzle action

| Model name            | JEUX AI-107                  |
|-----------------------|------------------------------|
| Power Supply          | AC 220 V, 50/60 Hz, 1⌀       |
| Power Consumption     | 3600 W                       |
| Compressed Air        | > 0.4 MPa                    |
| Maximum Sealing Speed | 18 m/min                     |
| Maximum Temperature   | 800°C                        |
| Nozzle Unit           | 22 mm                        |
| Upper Roller Width    | 25.4 mm                      |
| Lower Roller Width    | 31 mm                        |
| Dimensions            | 1200 x 750 x 1800 mm (LxWxH) |
| Net Weight            | 150 kg                       |
| Optional Roller       | 8-30 mm                      |

Possible specifications: A, D, I

\*For ordering options please see page 15



JEUX AI-107 spec A-NNN

## JEUX AI-118

Post-Bed, Seam Sealing Machine with Differential Speed

### KEY FEATURES

- Affordable Price
- Digital Tape Feeder (Tape Tension Control)
- Differential Speed Top/Bottom Roller
- Digital Air Pressure Display
- Color Touch Screen Interface
- Multi-Language Software
- USB Port
- Easy Settings Adjustment on Big Panel

| Model name            | JEUX AI-118                  |
|-----------------------|------------------------------|
| Power Supply          | AC 220 V, 50/60 Hz, 1ϕ       |
| Power Consumption     | 3600 W                       |
| Compressed Air        | > 0.4 MPa                    |
| Maximum Sealing Speed | 24 m/min.                    |
| Maximum Temperature   | 800°C                        |
| Nozzle Unit           | 22 mm                        |
| Upper Roller Width    | 25.4 mm                      |
| Lower Roller Width    | 31 mm                        |
| Dimensions            | 1200 x 750 x 1700 mm (LxWxH) |
| Net Weight            | 130 kg                       |
| Optional Roller       | 10-31 mm                     |

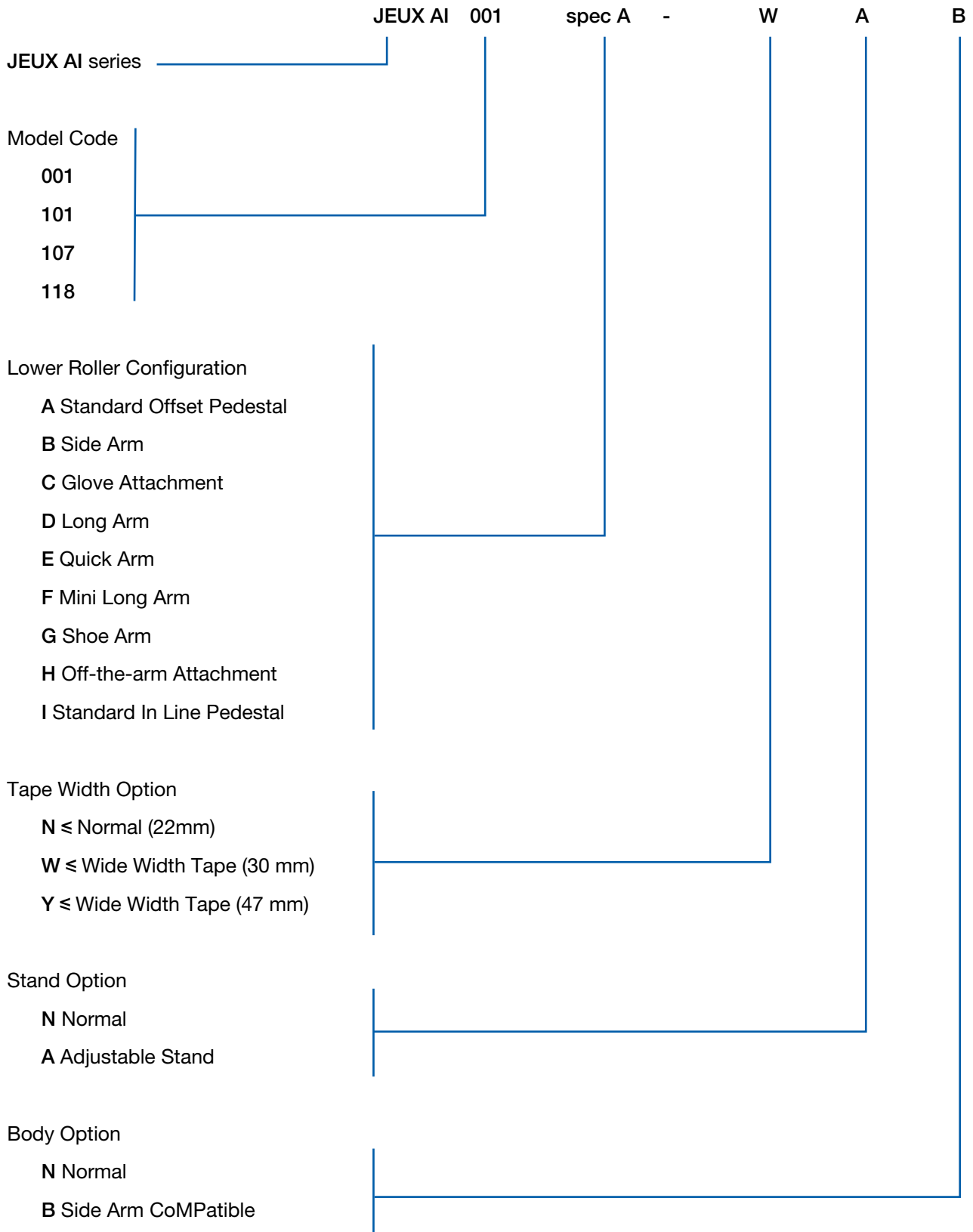
Possible specifications: A, I

\*For ordering options please see page 15



JEUX AI-118

## SELECTION GUIDE FOR JEUX AI-SERIES

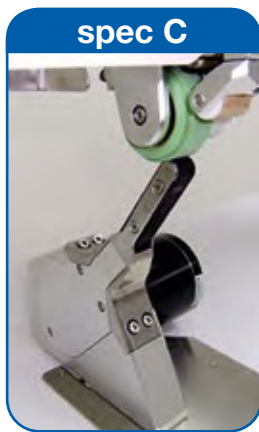




STANDARD OFFSET  
PEDESTAL



SIDE ARM



GLOVE ATTACHMENT



LONG ARM



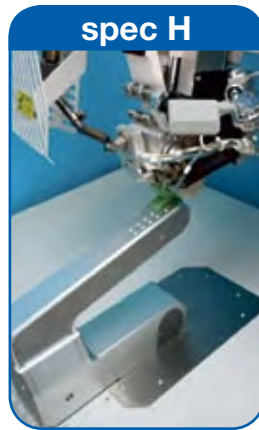
QUICK ARM



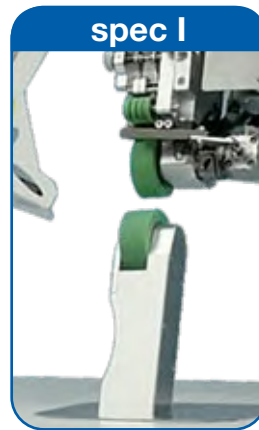
MINI LONG ARM



SHOE ARM



OFF-THE-ARM  
ATTACHMENT



STANDARD IN LINE  
PEDESTAL

| Classified | Item  | JEUX AI-001 | JEUX AI-101 | JEUX AI-107 | JEUX AI-118 |
|------------|---|-------------|-------------|-------------|-------------|
| Features   | Power save mode                             | •           | •           | •           | •           |
| Features   | Heat press mode                             | •           | •           | •           | •           |
| Features   | Start / stop seal skip prevention           | •           | •           | •           | •           |
| Features   | Auto micro reverse                          | •           | •           | •           | •           |
| Features   | Individual program for start / middle / end | •           | •           | •           | •           |
| Features   | Error message                               | •           | •           | •           | •           |
| Features   | Working lamp                                | •           | •           | •           | •           |
| Features   | Real time variable speed sealing            | •           |             |             |             |
| Features   | Production statistics                       | •           | •           | •           | •           |
| Features   | Real time clock                             | •           | •           |             | •           |
| Features   | Roller cooler                               | •           | •           | •           | •           |
| Features   | Temporary stop pressure release             | •           |             |             |             |
| Features   | Fix length mode                             | •           | •           | •           | •           |
| Features   | USB Disk                                    |             | •           |             | •           |
| Features   | Digital pressure indication                 |             | •           | •           | •           |
| Control    | Multi-function foot switch                  | •           | •           | •           |             |
| Control    | Control pedal number                        | 2           | 2           | 2           | 3           |
| Control    | Password protection                         | •           | •           | •           | •           |
| Control    | Touch panel control                         | •           | •           | •           | •           |
| Control    | No. of memory                               | 30          | 40          |             | 5           |
| Control    | No. of parameter                            | 35          | 44          | 28          | 21          |

## TAPE BONDING / SEAM SEALING

| Classified                 | Item                                  | JEUX AI-001   | JEUX AI-101   | JEUX AI-107 | JEUX AI-118 |
|----------------------------|---------------------------------------|---------------|---------------|-------------|-------------|
| Control                    | Parameter lock                        | •             | •             | •           | •           |
| Control                    | No. of controller                     | 2             | 1             | 1           | 1           |
| Control                    | Temperature deviation (°C)            | 1             | 1             | 1           | 1           |
| Control                    | Emulation mode                        |               |               |             | •           |
| Nozzle                     | Movement type                         | Digital Motor | Digital Motor | Pneumatic   | Pneumatic   |
| Nozzle                     | Position adjustment type              | Digital Motor | Digital Motor | Mechanical  | Mechanical  |
| Nozzle                     | Movement dimensions                   | 3 Axis        | 3 Axis        | 2 Axis      | 1 Axis      |
| Nozzle                     | Angle adjustment                      | •             | •             | •           | •           |
| Nozzle                     | Digital in / out timing adjustment    | •             | •             |             |             |
| Nozzle                     | Oscillation mode                      | •             | •             |             |             |
| Nozzle                     | Parking position                      | •             | •             | •           |             |
| Nozzle                     | Hovering position                     | •             | •             | •           |             |
| Nozzle                     | Soft landing movement                 | •             | •             |             |             |
| Nozzle                     | Calibration mode                      | •             | •             |             | •           |
| Cutter                     | Hand cut mode                         | •             | •             | •           | •           |
| Cutter                     | Foot cut mode                         | •             | •             | •           | •           |
| Cutter                     | Precision digital tape feeder         | •             | •             | •           | •           |
| Tensioner                  | Type                                  | Digital       | Digital       | Digital     | Digital     |
| Tensioner                  | Tape end alarm                        | •             | •             | •           | •           |
| Tensioner                  | Tape metering function                | •             | •             | •           | •           |
| Transmission               | Transmission type                     | Timing Belt   | Timing Belt   | Timing Belt | Timing Belt |
| Transmission               | No. of motor                          | 7             | 6             | 3           | 3           |
| Transmission               | Speed control                         | Digital       | Digital       | Digital     | Digital     |
| Transmission               | Tolerance                             | < 1%          | < 1%          | < 1%        | < 1%        |
| Transmission               | Changeable bottom roller diameter     | •             | •             |             |             |
| Transmission               | Differential speed top / bottom motor | •             | •             | •           | •           |
| Transmission               | Manual reverse rotation               | •             | •             | •           | •           |
| Construction               | Slant body                            | •             | •             | •           | •           |
| Construction               | Body type                             | Sheet Metal   | Sheet Metal   | Sheet Metal | Sheet Metal |
| Lower Roller Configuration | Spec A - standard offset pedestal     | •             | •             | •           | •           |
| Lower Roller Configuration | Spec B - side arm                     | •             | •             |             |             |
| Lower Roller Configuration | Spec C - glove attachment             | •             | •             |             | •           |
| Lower Roller Configuration | Spec D - long arm                     | •             | •             | •           |             |
| Lower Roller Configuration | Spec E - quick arm                    | •             | •             |             |             |
| Lower Roller Configuration | Spec F - mini long arm                | •             | •             |             |             |
| Lower Roller Configuration | Spec G - shoe arm                     | •             | •             |             |             |
| Lower Roller Configuration | Spec I - standard in line pedestal    |               |               | •           | •           |
| Lower Roller Configuration | Spec J - slanted pole                 |               |               | •           |             |
| Option                     | Wide width tape (30 mm)               | •             | •             |             |             |
| Option                     | Adjustable stand                      | •             |               |             |             |
| Option                     | Side arm compatible                   | •             | •             |             |             |
| Option                     | Seam allowance guide                  | •             | •             | •           |             |
| Option                     | Narrow tape guide                     | •             | •             | •           |             |

## JEUX SF-816

### Post-Bed Tape Laydown with Fabric Edge Trimmer

- Workable on 2D and 3D construction
- Both straight and curve seam
- Perfect for knit and lycra
- Precise trimming
- Software upgradable

#### KEY FEATURES

- Differential speed top / bottom roller
- Color touch screen interface
- Digital tensioning device
- Adjustable cutter speed
- Convertible platform

| Model name            | JEUX SF-816                  |
|-----------------------|------------------------------|
| Power Supply          | AC 220 V, 50/60 Hz, 1Φ       |
| Power Consumption     | 3600 W                       |
| Compressed Air        | > 0.4 MPa                    |
| Maximum Sealing Speed | 9 m / min                    |
| Maximum Temperature   | 800°C                        |
| Nozzle Unit           | 12 mm                        |
| Upper Roller Width    | 15 mm                        |
| Lower Roller Width    | 15 mm                        |
| Dimensions            | 1200 x 700 x 1800 mm (LxWxH) |
| Net Weight            | 140 kg                       |



JEUX SF-816



## JEUX SF-829

### Sewfree Tape Laydown with Ultrasonic Fabric Edge Trimmer

- Workable on 2D and 3D construction
- Perfect for knit and lycra
- No fraying at the edge
- Both straight and curve seam
- Precise trimming

#### KEY FEATURES

- User friendly sewing machine platform
- Extremely narrow allowance
- 28 kHz quiet operation
- Differential speed top / bottom roller
- Color touch screen interface

| Model name            | JEUX SF-829                  |
|-----------------------|------------------------------|
| Power Supply          | AC 220 V, 50/60 Hz, 1⌀       |
| Power Consumption     | 700 W                        |
| Compressed Air        | > 0.4 MPa                    |
| Maximum Sealing Speed | 5 m / min                    |
| Maximum Temperature   | 350°C                        |
| Upper Roller Width    | 15 mm                        |
| Lower Roller Width    | 20 mm                        |
| Dimensions            | 1220 x 750 x 1400 mm (LxWxH) |
| Net Weight            | 140 kg                       |
| Ultrasonic Frequency  | 28 kHz                       |
| Horn Dimension        | ⌀30 mm                       |



JEUX SF-829

## JEUX SF-828

### Multifunctional Post-Bed Bonding Machine

- Workable on 2D and 3D construction
- Both straight and curve seam
- Stable temperature
- Stretch fabric ready

#### KEY FEATURES

- Multifunctional: seam-sealing, overlapping, hemming and binding operations
- Multi-heater ensures adhesive strength
- Differential speed top / bottom roller
- Color touch screen interface
- Automatic tensioning device

| Model name                 | JEUX SF-828                  |
|----------------------------|------------------------------|
| Power Supply               | AC 220 V, 50/60 Hz, 1Φ       |
| Heater Power               | 2680 W                       |
| Compressed Air             | > 0.4 MPa                    |
| Maximum Speed              | 5 m / min                    |
| Maximum Nozzle Temperature | 350°C                        |
| Maximum Roller Temperature | 250°C                        |
| Working Width              | 6 ~ 20 mm                    |
| Dimensions                 | 1220 x 700 x 1450 mm (LxWxH) |
| Net Weight                 | 130 kg                       |



JEUX SF-828

# TAPE BONDING / SEAM SEALING

## LHP-PP1-N

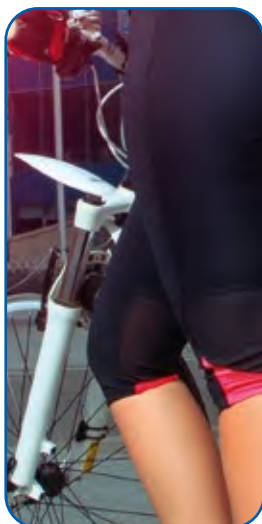
Hot and Cold Press Tape Bonding Machine

### KEY FEATURES

- This machine uses specialized bonding tape to fuse fabric together in place of normal stitches
- The bond created is strong and water tight after cooling
- This tape can also be used on top of normal stitch seams to make them waterproof
- Perfectly suited for sportswear, swimwear or safety gear
- Tape finishing can also be used for design purposes to give a garment a point of difference.

| Model name               | LHP-PP1-N                 |
|--------------------------|---------------------------|
| Power Required           | 1P / 200, 220 V, 50/60 Hz |
| Power Consumption        | 0,5 SK VA                 |
| Heat Method              | Hot Plate                 |
| Arm Type                 | Post Type                 |
| Feed Speed               | Max. 5 cm / min           |
| Upper Heater Temperature | Max 280°C                 |
| Lower Heater Temperature | Max 190°C                 |
| Welding Width            | 13 cm                     |

Perfect for Knitted Materials



LHP-PP1-N

## QHP-A05

Post-Bed, Seam-Sealing Machine with Differential Speed

### KEY FEATURES

- Hot air tape bonding uses extremely hot air to melt specialized welding tape; the melted welding tape is then fused to the fabric as it passes through an upper and lower roller
- This bonding method can seal an existing bond (ultrasonic machine)
- This bonding is used to make traditional sewing seams waterproof
- It can also be used as a design feature on apparel products

| Model name             | QHP-A05  |
|------------------------|--|
| Power Consumption      | AC 220 V, 50/60 Hz, 1Φ   |
| Upper Roller           | Steel (Width: 28mm or 30mm / Shape: Groove, Flat or Concave) or Silicon Rubber (30 mm) |
| Lower Roller           | Silicon Rubber (width: 30 mm / Shape: Flat)  |
| Nozzle Heater          | 2.0 KW (200 V)   |
| Nozzle Width           | 22 mm, 24 mm, 26 mm  |
| Nozzle Air Temperature | Up to 750°C  |
| Air Consumption        | 100 liter/min.   |



QHP-A05

# TAPE BONDING / SEAM SEALING

## QHP-A08

Post-Bed, Seam-Sealing Machine with Differential Speed and Variable Cylinder / Post Arm

### KEY FEATURES

- Shape of air delivery system and rollers make this suitable for curved objects
- The machine arm can register the movements of the operator during bonding and adjust the angle accordingly
- Angle adjustment ensure a smooth and easy operation
- Air temperature can be easily adjusted through the operational interface

| Model name             | QHP-A08                         |
|------------------------|---------------------------------|
| Power Required         | 1P/ 200, 220, 240 V 50/60 Hz    |
| Power Consumption      | Abt. 2.3 kVA                    |
| Nozzle Heater          | 2.0 kW (200 V)                  |
| Nozzle Air Temperature | Up to 750°C                     |
| Feed Speed             | Max: 10 m / min                 |
| Upper Roller           | Silicon rubber (30 mm)          |
| Lower Roller           | For small diameter tape sealing |
| Air Consumption        | 100 litter / min                |
| Arm Type               | Variable moving type            |



Hot air tape bonding machine, variable cylinder / post arm



QHP-A08



**ULTRASONIC WELDING**

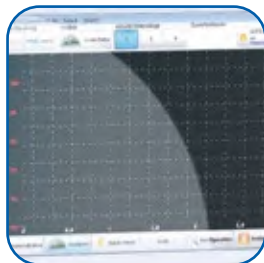
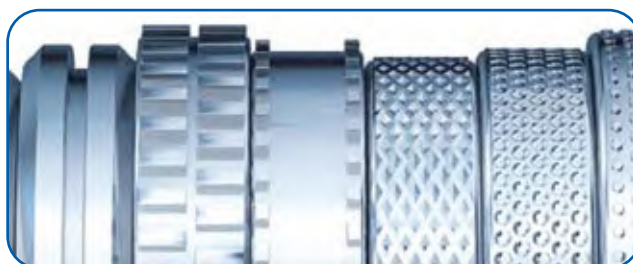
## JEUX 7510

Flat Bed Ultrasonic Machine

### KEY FEATURES

- A wide range of anvil wheels allows embossing of any profile or welding structure
- No compressed air required
- Newly developed user-interface and custom software
- Cutting and welding functions possible (S Type)
- Flat bed allows for easy and large working area
- Up to 12 m / min welding speed possible
- Automatic roller pressure adjustment

| Model name              | JEUX 7510-S     | JEUX 7510-T |
|-------------------------|-----------------|-------------|
| Sonotrode               | Steel           | Titanium    |
| Frequency               | 35 kHz          |             |
| Sonotrode Standard Size | 10 mm           |             |
| Maximum welding speed   | 12 m/min        |             |
| User-Interface          | 7" touch screen |             |
| Power Supply            | 230 V, 50 Hz    |             |



JEUX 7510

## JEUX US-511

### Ultrasonic Rotary Welding Machine

#### KEY FEATURES

- Automatic Frequency Tracking Ultrasonic System 28 kHz
- Digital Pressure Indicator
- Digital Ultrasonic Frequency Level Indicator
- Programmable Seam Length Programs
- Extra Roller Pressure Controlled From Pedal
- Settings Protection By External Key
- Color Touch Screen Interface
- High Max. Welding Speed
- Suitable For Stretchy Fabrics
- Working On Straight And Curvy Seams
- Customized Welding Wheels For Various Operations
- Affordable Price



Anvil and Sonotrode

| Model name            | JEUX US-511                  |
|-----------------------|------------------------------|
| Power Supply          | AC 220 V, 50/60 Hz, 1Φ       |
| Power Consumption     | 700 W                        |
| Ultrasonic Frequency  | 28 kHz                       |
| Horn Dimension        | 50 mm                        |
| Maximum Welding Speed | 20 m / min                   |
| Dimensions            | 1200 x 650 x 1230 mm (LxWxH) |
| Net Weight            | 108 kg                       |



JEUX US-511

#### OPTIONAL ITEMS

| Item Code |                                |   |
|-----------|--------------------------------|---|
| JJBHH2XP  | H2XP US-511 CUSTOM MADE ROLLER |  |
| JJBHH2XQ  | H2XQ US-511 CUSTOM MADE ROLLER |  |
| JJBHH3D   | H3D US-511 CUSTOM MADE ROLLER  |  |
| JJBHH3X   | H3X US-511 CUSTOM MADE ROLLER  |  |
| JJBHH4X   | H4X US-511 CUSTOM MADE ROLLER  |  |
| JJBHH20H  | H20H US-511 CUSTOM MADE ROLLER |  |
| JJBHH40   | H40H US-511 CUSTOM MADE ROLLER |  |



## JEUX US-512

### Ultrasonic Rotary Welding Machine

#### KEY FEATURES

- Automatic Frequency Tracking Ultrasonic System 35 kHz
- Digital Pressure Indicator
- Programmable Seam Length Programs
- Extra Roller Pressure Controlled From Pedal
- Settings Protection By External Key
- Color Touch Screen Interface
- Suitable For Stretchy Fabrics
- Working On Straight And Curvy Seams
- Customized Welding Wheels For Various Operations
- Affordable Price

| Model name            | JEUX US-512                  |
|-----------------------|------------------------------|
| Power Supply          | AC 220 V, 50/60 Hz, 1⌀       |
| Power Consumption     | 700 W                        |
| Ultrasonic Frequency  | 35 kHz                       |
| Horn Dimension        | 11 mm                        |
| Maximum Welding Speed | 8 m / min                    |
| Dimensions            | 1180 x 610 x 1220 mm (LxWxH) |
| Net Weight            | 120 kg                       |



Anvil and Sonotrode



JEUX US-512

## LWU-3015-4BT

Ultrasonic Welding Machine with Variable Cylinder / Post Arm

### KEY FEATURES

- The machine uses ultrasonic vibrations to heat fabric, fusing it together
- This machine creates seamless finishing's that are comfortable to wear and allow for high stretchiness
- Perfectly suited for non-woven fabric

| Model name            | LWU 3015-4BT   |
|-----------------------|--|
| Power Required        | 1P 200 V, 50/60 Hz   |
| Power Consumption     | 1,0 kVA  |
| Power Output          | Max. 600 W   |
| Oscillating Frequency | 30 kHz   |
| Feed Speed            | 0-8.0 m / min (minimum 0,1m / min)   |
| Motor                 | 2 Stepping Motors  |
| Presser               | Air Cylinder*  |
| Others                | PLC Control / LCD Touch Panel / Control Horn Cooling Device / Air Pressure Detector / Welding Roller Cooling & Blowing Device Touch sensor |

\*air compressor is required



LWU-3015-4BT



**HEAT PRESSING**

## JEUX CS-651

### Automatic Cuff Press Machine

- Single or double cuff mode
- Avoid overheating and skipping
- Separate left and right temperature control
- Digitally controlled rotating action
- Color touch screen interface
- Dual time shift mode

| Model name          | JEUX CS-651                  |
|---------------------|------------------------------|
| Power Supply        | AC 220 V, 50/60 Hz, 1 $\Phi$ |
| Heater Power        | 1500 W                       |
| Compressed Air      | > 0.4 MPa                    |
| Maximum Temperature | 260°C                        |
| Timing Range        | 1-999 Seconds                |
| Upper Mold Area     | 120 x 80 x R50 mm            |
| Lower Mold Area     | 120 x 73 x R50 mm            |
| Net Weight          | 650 x 380 x 1120 mm (LxWxH)  |
| Net Weight          | 68 kg                        |



JEUX CS-651 spec A-A2R2-120073R050

## JEUX CS-652

### Pneumatic Flat Press Machine

- Consistent temperature
- Uniform pressure
- Simple to use
- Good for all fabric
- Vertical press motion
- Preset heating time
- Safety lever

#### KEY FEATURES

- Both hands push button activation for added safety
- Flexible changeable lower platform
- Press travel limiting device
- Optional lighting system
- Foot pedal activation

| Model name          | JEUX CS-652                 |
|---------------------|-----------------------------|
| Power Supply        | AC 220 V, 50/60 Hz, 1Φ      |
| Heater Power        | 1000 W                      |
| Compressed Air      | > 0.4 MPa                   |
| Maximum Temperature | 260°C                       |
| Timing Range        | 1-999 Seconds               |
| Upper Mold Area     | 206 x 174 mm                |
| Lower Mold Area     | 203 x 152 mm                |
| Dimensions          | 520 x 380 x 1050 mm (LxWxH) |
| Net Weight          | 45 kg                       |
| Extra Lower Mold    | 150 x 50, Ø68 mm            |

Provided as standard



Ø 68 mm



150x50 mm



JEUX CS-652 spec A-A1A1-20015



JEUX CS-652 spec.A-A1T2-20015

## JEUX CS-653

### Pneumatic Flat Press Machine

- PLC controlled
- Consistent temperature
- Uniform pressure
- Simple to use

#### KEY FEATURES

- Both hands push button activation for added safety
- Flexible changeable lower platform
- Foot pedal or handle bar activation
- Top plate swing out design
- Dual time shift mode
- Vertical press motion
- Key locking function
- Dual counters

| Model name          | JEUX CS-653                  |
|---------------------|------------------------------|
| Power Supply        | AC 220 V, 50/60 Hz, 1 $\Phi$ |
| Heater Power        | 1000 W                       |
| Compressed Air      | > 0.4 MPa                    |
| Maximum Temperature | 260°C                        |
| Timing Range        | 1-999 Seconds                |
| Upper Mold Area     | 206 x 174 mm                 |
| Lower Mold Area     | 203 x 152 mm                 |
| Dimensions          | 450 x 560 x 910 mm (LxWxH)   |
| Net Weight          | 50 kg                        |
| Extra Lower Mold    | 150 x 50, $\Phi$ 68 mm       |

Provided as standard



$\Phi$  68 mm



150x50 mm



JEUX CS-653 spec A-D1M2-020015

## JEUX CS-654

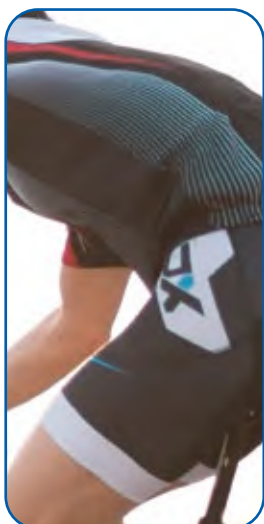
### Pneumatic Flat Press Machine

- Color touch screen control panel
- PLC controlled
- Consistent temperature
- On screen pressure reading

#### KEY FEATURES

- Both hands push button activation for added safety
- Digital pressure and temperature interlock
- Selectable foot pedal activation
- Key locking supervisor mode
- Dual time shift mode
- Self leveling platform
- Dual counters
- Trend display

| Model name          | JEUX CS-654                 |
|---------------------|-----------------------------|
| Power Supply        | AC 220 V, 50/60 Hz, 1Φ      |
| Heater Power        | 3600 W                      |
| Compressed Air      | > 0.4 MPa                   |
| Maximum Temperature | 260°C                       |
| Timing Range        | 1-999 Seconds               |
| Upper Mold Area     | 320 x 320 mm                |
| Lower Mold Area     | 300 x 300 mm                |
| Dimensions          | 460 x 700 x 1100 mm (LxWxH) |
| Net Weight          | 74 kg                       |



JEUX CS-658 spec A-D2A1-038008

## JEUX CS-655

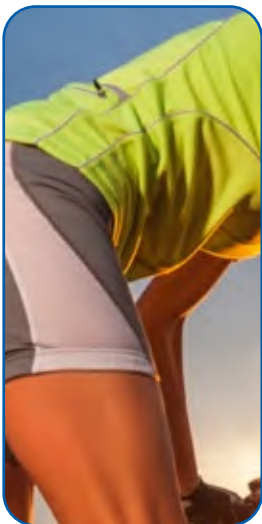
### Pneumatic Flat Press Machine

- Color touch screen control panel
- PLC controlled
- Consistent temperature
- On screen pressure reading

#### KEY FEATURES

- Both hands push button activation for added safety
- Digital pressure and temperature interlock
- Selectable foot pedal activation
- Key locking supervisor mode
- Dual time shift mode
- Self leveling platform
- Dual counters
- Trend display

| Model name          | JEUX CS-655                |
|---------------------|----------------------------|
| Power Supply        | AC 220 V, 50/60 Hz, 1Φ     |
| Heater Power        | 1500 W                     |
| Compressed Air      | > 0.4 MPa                  |
| Maximum Temperature | 260°C                      |
| Timing Range        | 1-999 Seconds              |
| Upper Mold Area     | 305 x 305 mm               |
| Lower Mold Area     | 300 x 300 mm               |
| Dimensions          | 510 x 660 x 1100mm (LxWxH) |
| Net Weight          | 90 kg                      |



JEUX CS-655 spec A-A1A1-030030



JEUX CS-655 spec A-A 1 T2-030030



# HEAT PRESSING

## JEUX CS-658

### Pneumatic Flat Heat and Cool Press Machine

- Color touch screen control panel
- Consistent temperature
- Uniform pressure
- Software upgradable
- Good for all fabric
- PLC controlled

#### KEY FEATURES

- Both hands push button activation for added safety
- Digital pressure and temperature interlock
- Flexible changeable lower platform
- Selectable foot pedal activation
- Key locking supervisor mode
- Dual time shift mode
- Top plate swing out design
- Dual counters & trend display

| Model name          | JEUX CS-658                |
|---------------------|----------------------------|
| Power Supply        | AC 220 V, 50/60 Hz, 1Ø     |
| Heater Power        | 1000 W                     |
| Compressed Air      | > 0.4 MPa                  |
| Maximum Temperature | 260°C                      |
| Timing Range        | 1-999 Seconds              |
| Upper Mold Area     | 380 x 150 mm               |
| Lower Mold Area     | 380 x 80 mm                |
| Dimensions          | 710 x 780 x 830 mm (LxWxH) |
| Net Weight          | 93 kg                      |



water circulator provided as standard



optional chiller



JEUX CS-658 spec A-D2A1-038008

## JEUX CS-661

### Pneumatic Flat Heat and Cool Press Machine

- Color touch screen control panel
- Software upgradable
- Good for all fabric
- PLC controlled

#### KEY FEATURES

- Both hands push button activation for added safety
- Digital pressure and temperature interlock
- Selectable foot pedal activation
- Key locking supervisor mode
- Dual time shift mode
- Self leveling platform
- Dual counters
- Trend display

| Model name          | JEUX CS-661                  |
|---------------------|------------------------------|
| Power Supply        | AC 220 V, 50/60 Hz, 1 $\Phi$ |
| Heater Power        | 1000 W                       |
| Compressed Air      | > 0.4 MPa                    |
| Maximum Temperature | 260°C                        |
| Timing Range        | 1-999 Seconds                |
| Upper Mold Area     | 340 x 100 mm                 |
| Lower Mold Area     | 300 x 95 mm                  |
| Dimensions          | 510 x 690 x 1400 mm (LxWxH)  |
| Net Weight          | 110 kg                       |
| Extra Lower Mold    | 150 x 50, $\Phi$ 68          |



water circulator provided as standard



optional chiller

Provided as standard



$\Phi$  68 mm



150x50 mm



JEUX CS-661 spec A-F2A1-030010

## JEUX CS-662

### Pneumatic Flat Press Machine

- Color touch screen control panel
- PLC controlled
- 3 Zones temperature control
- Even temperature, typical 1°C tolerance across bed
- On screen pressure reading

### KEY FEATURES

- Both hands push button activation for added safety
- Digital pressure and temperature interlock
- Vacuum platform for precise positioning
- Selectable foot pedal activation
- Key locking supervisor mode
- Dual time shift mode
- Dual counters
- Trend display

| Model name          | JEUX CS-662                  |
|---------------------|------------------------------|
| Power Supply        | AC 380 V, 50/60 Hz, 1Φ       |
| Heater Power        | 7500 W                       |
| Compressed Air      | > 0.4 MPa                    |
| Maximum Temperature | 260°C                        |
| Timing Range        | 1-999 Seconds                |
| Upper Mold Area     | 1250 x 530 mm                |
| Lower Mold Area     | 1200 x 500 mm                |
| Dimensions          | 1350 x 950 x 1470 mm (LxWxH) |
| Net Weight          | 590 kg                       |



JEUX CS-662 spec V-A1A1-120050

## JEUX CS-663

### Pneumatic Curve Heat and Cool Press Machine

- Color touch screen control panel
- Consistent temperature
- Uniform pressure
- Software upgradable
- Good for all fabric
- PLC controlled

#### KEY FEATURES

- Both hands push button activation for added safety
- Digital pressure and temperature interlock
- Flexible changeable lower platform
- Selectable foot pedal activation
- Key locking supervisor mode
- Dual time shift mode
- Top plate swing out design
- Dual counters & trend display

| Model name          | JEUX CS-663                |
|---------------------|----------------------------|
| Power Supply        | AC 220 V, 50/60 Hz, 1Ø     |
| Heater Power        | 600 W                      |
| Compressed Air      | > 0.4 MPa                  |
| Maximum Temperature | 260°C                      |
| Timing Range        | 1-999 Seconds              |
| Upper Mold Area     | 148 x 40 x R83 mm          |
| Lower Mold Area     | 130 x 40 x R83 mm          |
| Dimensions          | 710 x 780 x 830 mm (LxWxH) |
| Net Weight          | 78 kg                      |



water circulator provided as standard



optional chiller

JEUX CS-663 spec A-D2A 1-130040R083

## JEUX CS-664

### Pneumatic Flat Press Machine

- Color touch screen control panel
- Software upgradable
- Good for all fabric
- PLC controlled

#### KEY FEATURES

- Both hands push button activation for added safety
- Digital pressure and temperature interlock
- Unique motorized heat / cool changeover
- Selectable foot pedal activation
- Key locking supervisor mode
- Dual time shift mode
- Dual counters
- Trend display

| Model name          | JEUX CS-664                 |
|---------------------|-----------------------------|
| Power Supply        | AC 220 V, 50/60 Hz, 1Ø      |
| Heater Power        | 1000 W                      |
| Compressed Air      | > 0.4 MPa                   |
| Maximum Temperature | 260°C                       |
| Timing Range        | 1-999 Seconds               |
| Upper Mold Area     | 340 x 100 mm                |
| Lower Mold Area     | 300 x 95 mm                 |
| Dimensions          | 510 x 690 x 1400 mm (LxWxH) |
| Net Weight          | 110 kg                      |
| Extra Lower Mold    | 150 x 50, Ø68               |

Provided as standard



Ø 68 mm



150x50 mm



JEUX CS-664 spec A-D1A1-028016



swing off position

## JEUX CS-665

### Pneumatic Flat Press Machine

- Color touch screen control panel
- PLC controlled
- Consistent temperature
- On screen pressure reading

#### KEY FEATURES

- Both hands push button activation for added safety
- Digital pressure and temperature interlock
- Selectable foot pedal activation
- Key locking supervisor mode
- Dual time shift mode
- Self leveling platform
- Dual counters
- Trend display

| Model name          | JEUX CS-665                 |
|---------------------|-----------------------------|
| Power Supply        | AC 220 V, 50/60 Hz, 1Φ      |
| Heater Power        | 1600 W                      |
| Compressed Air      | > 0.4 MPa                   |
| Maximum Temperature | 260°C                       |
| Timing Range        | 1-999 Seconds               |
| Upper Mold Area     | 610 x 130 mm                |
| Lower Mold Area     | 600 x 120 mm                |
| Dimensions          | 715 x 720 x 1124 mm (LxWxH) |
| Net Weight          | 90 kg                       |



JEUX CS-665 spec A-A1A1-060012

# HEAT PRESSING

## JEUX CS-666

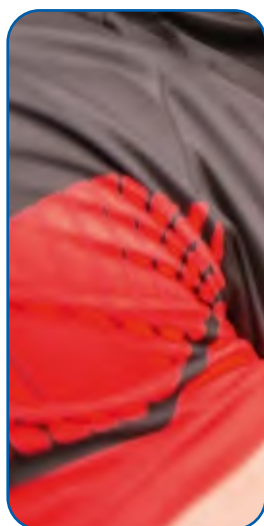
### Pneumatic Flat Press Machine

- Consistent temperature
- Uniform pressure
- Simple to use
- Good for all fabric
- Extremely affordable

#### KEY FEATURES

- Both hands push button activation for added safety
- Press travel limiting device
- Foot pedal activation
- Vertical press motion
- Preset heating time
- Safety lever

| Model name          | JEUX CS-666                 |
|---------------------|-----------------------------|
| Power Supply        | AC 220 V, 50/60 Hz, 1⌀      |
| Heater Power        | 1600 W                      |
| Compressed Air      | > 0.4 MPa                   |
| Maximum Temperature | 260°C                       |
| Timing Range        | 1-999 Seconds               |
| Upper Mold Area     | 610 x 130 mm                |
| Lower Mold Area     | 600 x 120 mm                |
| Dimensions          | 715 x 720 x 1124 mm (LxWxH) |
| Net Weight          | 90 kg                       |



JEUX CS-666 spec A-A1A1-060012

## JEUX CS-667

### Pneumatic Curve Press Machine

- Color touch screen control panel
- PLC controlled
- Consistent temperature
- On screen pressure reading

#### KEY FEATURES

- Both hands push button activation for added safety
- Digital pressure and temperature interlock
- Selectable foot pedal activation
- Key locking supervisor mode
- Dual time shift mode
- Dual counters
- Trend display

| Model name          | JEUX CS-667                 |
|---------------------|-----------------------------|
| Power Supply        | AC 220 V, 50/60 Hz, 1Φ      |
| Heater Power        | 1200 W                      |
| Compressed Air      | > 0.4 MPa                   |
| Maximum Temperature | 260°C                       |
| Timing Range        | 1-999 Seconds               |
| Upper Mold Area     | 302 x 95 x R191 mm          |
| Lower Mold Area     | 300 x 95 x R191 mm          |
| Dimensions          | 400 x 750 x 1215 mm (LxWxH) |
| Net Weight          | 70 kg                       |

Provided as standard



Ø 68 mm



150x50 mm



JEUX CS-667 spec V-A1A1-300095R191



## JEUX CS-668

### Pneumatic Curve Press Machine

- Consistent temperature
- Uniform pressure
- Simple to use
- Good for all fabric
- Extremely affordable

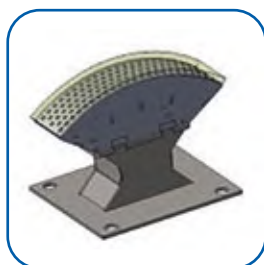
#### KEY FEATURES

- Both hands push button activation for added safety
- Press travel limiting device
- Foot pedal activation
- Vertical press motion
- Preset heating time
- Safety lever

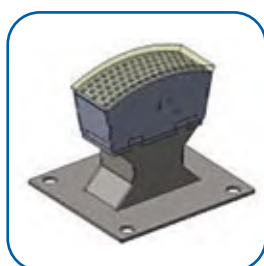
| Model name          | JEUX CS-668                 |
|---------------------|-----------------------------|
| Power Supply        | AC 220 V, 50/60 Hz, 1Φ      |
| Heater Power        | 1200 W                      |
| Compressed Air      | > 0.4 MPa                   |
| Maximum Temperature | 260°C                       |
| Timing Range        | 1-999 Seconds               |
| Upper Mold Area     | 302 x 95 x R191 mm          |
| Lower Mold Area     | 300 x 95 x R191 mm          |
| Dimensions          | 400 x 750 x 1215 mm (LxWxH) |
| Net Weight          | 70 kg                       |



OPTIONAL



middle mold



small mold

JEUX CS-668 spec A-A1A1-300095R191

## JEUX CS-669

### Pneumatic Flat Press Machine

- Color touch screen control panel
- PLC controlled
- Consistent temperature
- On screen pressure reading

#### KEY FEATURES

- Both hands push button activation for added safety
- Digital pressure and temperature interlock
- Selectable foot pedal activation
- Key locking supervisor mode
- Dual time shift mode
- Self leveling platform
- Dual counters
- Trend display

| Model name          | JEUX CS-669                  |
|---------------------|------------------------------|
| Power Supply        | AC 220 V, 50/60 Hz, 1 $\Phi$ |
| Heater Power        | 2600 W                       |
| Compressed Air      | > 0.4 MPa                    |
| Maximum Temperature | 260°C                        |
| Timing Range        | 1-999 Seconds                |
| Upper Mold Area     | 420 x 420 mm                 |
| Lower Mold Area     | 400 x 400 mm                 |
| Dimensions          | 525 x 770 x 1145 mm (LxWxH)  |
| Net Weight          | 120 kg                       |



JEUX CS-669 spec A-A1A1-040040

# HEAT PRESSING

## JEUX CS-671

### Manual Flat Press Machine

- Consistent temperature
- Simple to use
- Good for all fabric

#### KEY FEATURES

- Top plate swing out design
- Vertical press motion
- Preset heating time
- Manual clamping device
- Timeout buzzer

| Model name          | JEUX CS-671                |
|---------------------|----------------------------|
| Power Supply        | AC 220 V, 50/60 Hz, 1Φ     |
| Heater Power        | 1000 W                     |
| Maximum Temperature | 260°C                      |
| Timing Range        | 1-999 Seconds              |
| Upper Mold Area     | 206 x 156 mm               |
| Lower Mold Area     | 203 x 152 mm               |
| Dimensions          | 450 x 550 x 600 mm (LxWxH) |
| Net Weight          | 36 kg                      |
| Extra Lower Mold    | 150 x 50, Ø68              |



JEUX CS-671 spec M-D1A1-020015

Provided as standard



Ø 68 mm



150x50 mm



swing off position

## JEUX CS-672

### Pneumatic Flat Press Machine

- Consistent temperature
- Uniform pressure
- Simple to use
- Good for all fabric

#### KEY FEATURES

- Press travel limiting device
- Top plate swing out design
- Foot pedal activation
- Vertical press motion
- Preset heating time
- Safety lever

| Model name          | JEUX CS-672                |
|---------------------|----------------------------|
| Power Supply        | AC 220 V, 50/60 Hz, 1Φ     |
| Heater Power        | 1500 W                     |
| Compressed Air      | > 0.4 MPa                  |
| Maximum Temperature | 260°C                      |
| Timing Range        | 1-999 Seconds              |
| Upper Mold Area     | 305 x 305 mm               |
| Lower Mold Area     | 300 x 300 mm               |
| Dimensions          | 650 x 400 x 980 mm (LxWxH) |
| Net Weight          | 115 kg                     |



JEUX CS-672 spec A-D1A1-030030

# HEAT PRESSING

## JEUX CS-673

### Pneumatic Flat Press Machine

- Consistent temperature
- Uniform pressure
- Simple to use
- Good for all fabric

#### KEY FEATURES

- Top plate flip down design
- Foot pedal activation
- CoMPact body size
- Preset heating time

| Model name          | JEUX CS-673                |
|---------------------|----------------------------|
| Power Supply        | AC 220 V, 50/60 Hz, 1⌀     |
| Heater Power        | 1300 W                     |
| Compressed Air      | > 0.4 MPa                  |
| Maximum Temperature | 260°C                      |
| Timing Range        | 1-999 Seconds              |
| Upper Mold Area     | 300 x 150 mm               |
| Lower Mold Area     | 280 x 130 mm               |
| Dimensions          | 380 x 520 x 465 mm (LxWxH) |
| Net Weight          | 35 kg                      |
| Extra Lower Mold    | 150 x 50, ⌀68              |



Provided as standard



Ø 68 mm



150x50 mm

JEUX CS-673 spec A-S1A1-028013

## JEUX CS-674

### Pneumatic Flat Heat and Cool Press Machine

- Consistent temperature
- Uniform pressure
- Simple to use
- Good for all fabric

#### Key features

- Both hands push button activation for added safety
- Swinging heat / cool changeover
- Press travel limiting device
- Foot pedal activation
- Vertical press motion
- Preset heating time
- Safety lever

| Model name          | JEUX CS-674                  |
|---------------------|------------------------------|
| Power Supply        | AC 220 V, 50/60 Hz, 1 $\Phi$ |
| Heater Power        | 1000 W                       |
| Compressed Air      | > 0.4 MPa                    |
| Maximum Temperature | 260°C                        |
| Timing Range        | 1-999 Seconds                |
| Upper Mold Area     | 205 x 175 mm                 |
| Lower Mold Area     | 210 x 168 mm                 |
| Dimensions          | 430 x 580 x 850 mm (LxWxH)   |
| Net Weight          | 6 kg                         |
| Extra Lower Mold    | 150 x 50, $\Phi$ 68          |



water circulator provided as standard



optional chiller

JEUX CS-674 spec A-D2A 1-020015

## JEUX CS-675

### Pneumatic Flat Press Machine

- Consistent temperature
- Uniform pressure
- Simple to use
- Good for all fabric

#### KEY FEATURES

- Both hands push button activation for added safety
- Press travel limiting device
- Foot pedal activation
- Vertical press motion
- Preset heating time
- Safety lever

| Model name          | JEUX CS-675                 |
|---------------------|-----------------------------|
| Power Supply        | AC 220 V, 50/60 Hz, 1⌀      |
| Heater Power        | 3500 W                      |
| Compressed Air      | > 0.4 MPa                   |
| Maximum Temperature | 260°C                       |
| Timing Range        | 1-999 Seconds               |
| Upper Mold Area     | 520 x 520 mm                |
| Lower Mold Area     | 500 x 500 mm                |
| Dimensions          | 580 x 860 x 1250 mm (LxWxH) |
| Net Weight          | 150 kg                      |



JEUX CS-675 spec A-A1A1-050050

## JEUX CS-676

### Pneumatic Flat Press Machine

- Color touch screen control panel
- PLC controlled
- 6 Zones temperature control
- Even temperature, typical 2°C tolerance across bed
- On screen pressure reading

#### KEY FEATURES

- Both hands push button activation for added safety
- Digital pressure and temperature interlock
- Selectable foot pedal activation
- Key locking supervisor mode
- Dual time shift mode
- Dual counters
- Trend display

| Model name          | JEUX CS-676                   |
|---------------------|-------------------------------|
| Power Supply        | AC 220 V, 50/60 Hz, 1Φ        |
| Heater Power        | 12000 W                       |
| Compressed Air      | > 0.4 MPa                     |
| Maximum Temperature | 260°C                         |
| Timing Range        | 1-999 Seconds                 |
| Upper Mold Area     | 1250 x 830 mm                 |
| Lower Mold Area     | 1200 x 800 mm                 |
| Dimensions          | 1320 x 1300 x 1860 mm (LxWxH) |
| Net Weight          | 860 kg                        |



JEUX CS-675 spec A-A1A1-120080 + TA-030



## JEUX CS-677

### Pneumatic Flat Press Machine

- PLC controlled
- Consistent temperature
- Uniform pressure
- Simple to use
- Good for all fabric

#### KEY FEATURES

- Both hands push button activation for added safety
- Independently heating of upper and lower
- Foot pedal activation
- Dual time shift mode
- Vertical press motion
- Key locking function
- Dual counters

| Model name          | JEUX CS-677                 |
|---------------------|-----------------------------|
| Power Supply        | AC 220 V, 50/60 Hz, 1Φ      |
| Heater Power        | 2000 W                      |
| Compressed Air      | > 0.4 MPa                   |
| Maximum Temperature | 260°C                       |
| Timing Range        | 1-999 Seconds               |
| Upper Mold Area     | 320 x 90 mm                 |
| Lower Mold Area     | 320 x 90 mm                 |
| Dimensions          | 570 x 430 x 1500 mm (LxWxH) |
| Net Weight          | 75 kg                       |



JEUX CS-677 spec B-A 1A1-032009

## JEUX CS-678

### Pneumatic Flat Press Machine

- Consistent temperature
- Uniform pressure
- Simple to use
- Good for all fabric

#### KEY FEATURES

- Both hands push button activation for added safety
- Digital pressure and temperature interlock
- Key locking supervisor mode
- Single hand operation mode
- Optional foot pedal
- Dual counters
- Trend display

| Model name          | JEUX CS-678                  |
|---------------------|------------------------------|
| Power Supply        | AC 220 V, 50/60 Hz, 1Φ       |
| Heater Power        | 3500 W                       |
| Compressed Air      | > 0.4 MPa                    |
| Maximum Temperature | 260°C                        |
| Timing Range        | 1-999 Seconds                |
| Upper Mold Area     | 520 x 520 mm                 |
| Lower Mold Area     | 500 x 500 mm                 |
| Dimensions          | 1100 x 1460 x 600 mm (LxWxH) |
| Net Weight          | 300 kg                       |



JEUX CS-678 spec A-D1B2-050050

## JEUX CS-679

### Automatic Pick and Place Label Heat Press Machine

- Color touch screen control panel
- Software upgradable
- Good for all fabric
- PLC controlled

#### KEY FEATURES

- Both hands push button activation for added safety
- Selectable foot pedal activation
- Key locking supervisor mode
- Precise motorized positioning
- Automated label handling
- Self lock mode
- Dual counters
- Trend display

| Model name          | JEUX CS-679                |
|---------------------|----------------------------|
| Power Supply        | AC 220 V, 50/60 Hz, 1⌀     |
| Heater Power        | 600 W                      |
| Compressed Air      | > 0.4 MPa                  |
| Maximum Temperature | 260°C                      |
| Timing Range        | 1-999 Seconds              |
| Upper Mold Area     | 130 x 130 mm               |
| Lower Mold Area     | 110 x 110 mm               |
| Dimensions          | 920 x 1150 x 92 mm (LxWxH) |
| Net Weight          | 115 kg                     |



JEUX CS-679 spec A-A 1A1-011011

## JEUX CS-680

### Pneumatic Flat Press Machine

- Color touch screen control panel
- PLC controlled
- Consistent temperature
- Uniform pressure

#### KEY FEATURES

- Both hands push button activation for added safety
- Foot pedal or handle bar activation
- Dual time shift mode
- Top plate swing out design
- Vertical press motion
- Key locking function
- Dual counters
- Trend display

| Model name          | JEUX CS-680                 |
|---------------------|-----------------------------|
| Power Supply        | AC 220 V, 50/60 Hz, 1Φ      |
| Heater Power        | 1500 W                      |
| Compressed Air      | > 0.4 MPa                   |
| Maximum Temperature | 260°C                       |
| Timing Range        | 1-999 Seconds               |
| Upper Mold Area     | 305 x 305 mm                |
| Lower Mold Area     | 300 x 300 mm                |
| Dimensions          | 420 x 700 x 1020 mm (LxWxH) |
| Net Weight          | 102 kg                      |



JEUX CS-680 spec A-D1A1-030030



JEUX CS-680 spec A-D1M2-030030

## JEUX CS-681

### Pneumatic Flat Heat and Cool Press Machine

- Color touch screen control panel
- Software upgradable
- Good for all fabric
- PLC controlled
- Vacuum suction lower platform

#### KEY FEATURES

- Both hands push button activation for added safety
- Digital pressure and temperature interlock
- Unique motorized heat / cool changeover
- Selectable foot pedal activation
- Key locking supervisor mode
- Dual time shift mode
- Dual counters
- Trend display

| Model name          | JEUX CS-681                  |
|---------------------|------------------------------|
| Power Supply        | AC 220 V, 50/60 Hz, 1Φ       |
| Heater Power        | 1800 W                       |
| Compressed Air      | > 0.4 MPa                    |
| Maximum Temperature | 260°C                        |
| Timing Range        | 1-999 Seconds                |
| Upper Mold Area     | 1060 x 100 mm                |
| Lower Mold Area     | 1000 x 100 mm                |
| Dimensions          | 1400 x 920 x 2180 mm (LxWxH) |
| Net Weight          | 426 kg                       |



optional chiller

JEUX CS-681 spec V-F2A 1-100010

## JEUX CS-682

### Pneumatic Flat Heat and Cool Press Machine

- Consistent temperature
- 3 Zones temperature control
- On screen pressure reading
- Vacuum suction lower platform
- Uniform pressure
- Simple to use
- Good for all fabric

#### KEY FEATURES

- Both hands push button activation for added safety
- Key locking supervisor mode
- Digital pressure and temperature interlock
- Foot pedal activation
- Vacuum platform for precise position
- Dual counters
- Trend display
- Self locked mode

| Model name          | JEUX CS-682                   |
|---------------------|-------------------------------|
| Power Supply        | AC 380 V, 50/60 Hz, 1Φ        |
| Heater Power        | 10000 W                       |
| Compressed Air      | > 0.4 MPa                     |
| Maximum Temperature | 260°C                         |
| Timing Range        | 1-999 Seconds                 |
| Heat Mold Area      | 1030 x 530 mm                 |
| Cool Mold Area      | 1030 x 516 mm                 |
| Lower Mold Area     | 1000 x 500 mm                 |
| Dimensions          | 1500 x 1650 x 1510 mm (LxWxH) |
| Net Weight          | 1500 kg                       |



chiller provided as standard

JEUX CS-682 spec V-S2B1-100050

## JEUX CS-683

### Pneumatic Flat Heat and Cool Press Machine

- Color touch screen control panel
- Activation for added safety
- Consistent temperature
- Software upgradable
- Good for all fabric
- Uniform pressure
- PLC controlled

#### KEY FEATURES

- Both hands push button activation for added safety
- Digital pressure and temperature interlock
- Selectable foot pedal activation
- Key locking supervisor mode
- Top plate swing out design
- Dual counters
- Trend display

| Model name          | JEUX CS-683                 |
|---------------------|-----------------------------|
| Power Supply        | AC 220 V, 50/60 Hz, 1⌀      |
| Heater Power        | 1500 W                      |
| Compressed Air      | > 0.4 MPa                   |
| Maximum Temperature | 260°C                       |
| Timing Range        | 1-999 Seconds               |
| Upper Mold Area     | 305 x 305 mm                |
| Lower Mold Area     | 300 x 300 mm                |
| Dimensions          | 710 x 850 x 1100 mm (LxWxH) |
| Net Weight          | 135 kg                      |



water circulator provided as standard



optional chiller



JEUX CS-681 spec V-F2A 1-100010

## JEUX CS-686

### Pneumatic Flat Heat and Cool Press Machine

- Color touch screen control panel
- Software upgradable
- Good for all fabric
- PLC controlled

#### KEY FEATURES

- Both hands push button activation for added safety
- Digital pressure and temperature interlock
- Unique motorized heat /cool changeover
- Selectable foot pedal activation
- Key locking supervisor mode
- Self lock mode
- Dual counters
- Trend display

| Model name          | JEUX CS-686                 |
|---------------------|-----------------------------|
| Power Supply        | AC 220 V, 50/60 Hz, 1Φ      |
| Heater Power        | 2400 W                      |
| Compressed Air      | > 0.4 MPa                   |
| Maximum Temperature | 260°C                       |
| Timing Range        | 1-999 Seconds               |
| Upper Mold Area     | 310 x 310 mm                |
| Lower Mold Area     | 300 x 300 mm                |
| Dimensions          | 680 x 690 x 1520 mm (LxWxH) |
| Net Weight          | 196 kg                      |



optional chiller



JEUX CS-686 spec A-F2A1-030030



## JEUX CS-687

### Pneumatic Flat Heat and Cool Press Machine

- Color touch screen control panel
- Software upgradable
- Good for all fabric
- PLC controlled

#### KEY FEATURES

- Both hands push button activation for added safety
- Digital pressure and temperature interlock
- Unique motorized heat / cool changeover
- Selectable foot pedal activation
- Key locking supervisor mode
- Self lock mode
- Dual counters
- Trend display

| Model name          | JEUX CS-687                  |
|---------------------|------------------------------|
| Power Supply        | AC 220 V, 50/60 Hz, 1Φ       |
| Heater Power        | 3600 W                       |
| Compressed Air      | > 0.4 MPa                    |
| Maximum Temperature | 260°C                        |
| Timing Range        | 1-999 Seconds                |
| Upper Mold Area     | 610 x 310 mm                 |
| Lower Mold Area     | 600 x 300 mm                 |
| Dimensions          | 1000 x 690 x 1980 mm (LxWxH) |
| Net Weight          | 400 kg                       |



chiller provided as standard

JEUX CS-687 spec V-F2A1-060030

## JEUX CS-688

### Pneumatic Flat Press Machine

- Consistent temperature
- Uniform pressure
- Simple to use
- Good for all fabric

#### KEY FEATURES

- Press travel limiting device
- Foot pedal activation
- Vertical press motion
- Preset heating time
- Safety lever

| Model name          | JEUX CS-688                |
|---------------------|----------------------------|
| Power Supply        | AC 220 V, 50/60 Hz, 1Φ     |
| Heater Power        | 900 W                      |
| Compressed Air      | > 0.4 MPa                  |
| Maximum Temperature | 260°C                      |
| Timing Range        | 1-999 Seconds              |
| Upper Mold Area     | 310 x 110 mm               |
| Lower Mold Area     | 300 x 100 mm               |
| Dimensions          | 355 x 235 x 750 mm (LxWxH) |
| Net Weight          | 18 kg                      |



JEUX CS-688 spec A-A1A1-030010

## JEUX CS-693

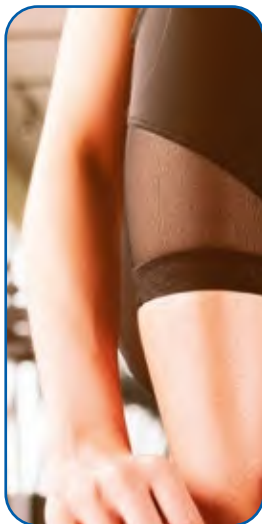
### Pneumatic Flat Press Machine

- Color touch screen control panel
- PLC controlled
- 3 Zones temperature control
- Tolerance across bed
- On screen pressure reading

#### KEY FEATURES

- Both hands push button activation for added safety
- Digital pressure and temperature interlock
- Selectable foot pedal activation
- Key locking supervisor mode
- Dual time shift mode
- Self leveling platform
- Dual counters
- Trend display

| Model name          | JEUX CS-693                 |
|---------------------|-----------------------------|
| Power Supply        | AC 220 V, 50/60 Hz, 1Φ      |
| Heater Power        | 3600 W                      |
| Compressed Air      | > 0.4 MPa                   |
| Maximum Temperature | 260°C                       |
| Timing Range        | 1-999 Seconds               |
| Upper Mold Area     | 780 x 380 mm                |
| Lower Mold Area     | 780 x 380 mm                |
| Dimensions          | 800 x 880 x 1800 mm (LxWxH) |
| Net Weight          | 183 kg                      |



JEUX CS-693 spec A-A1A1-078038

## JEUX CS-694

### Pneumatic Flat Press Machine

- Consistent temperature
- Uniform pressure
- Simple to use
- Good for all fabric
- Extremely affordable

#### KEY FEATURES

- Both hands push button activation for added safety
- Press travel limiting device
- Optional lighting system
- Foot pedal activation
- Vertical press motion
- Preset heating time
- Safety lever

| Model name          | JEUX CS-694                 |
|---------------------|-----------------------------|
| Power Supply        | AC 220 V, 50/60 Hz, 1Ø      |
| Heater Power        | 3600 W                      |
| Compressed Air      | > 0.4 MPa                   |
| Maximum Temperature | 260°C                       |
| Timing Range        | 1-999 Seconds               |
| Upper Mold Area     | 780 x 380 mm                |
| Lower Mold Area     | 780 x 380 mm                |
| Dimensions          | 800 x 880 x 1800 mm (LxWxH) |
| Net Weight          | 183 kg                      |



JEUX CS-694 spec A-A1A1-078038

## JEUX CS-695

### Automatic Twin Bed Flat Press Machine

- Color touch screen control panel
- 2 Zones temperature control
- On screen pressure reading
- Consistent temperature
- Extremely affordable
- Uniform pressure
- PLC controlled

#### KEY FEATURES

- Both hands push button activation for added safety
- Digital pressure and temperature interlock
- Unique pneumatic twin bed changeover
- Selectable foot pedal activation
- Key locking supervisor mode
- Trend display
- Dual counters

| Model name          | JEUX CS-695                  |
|---------------------|------------------------------|
| Power Supply        | AC 220 V, 50/60 Hz, 1 $\Phi$ |
| Heater Power        | 3200 W                       |
| Compressed Air      | > 0.4 MPa                    |
| Maximum Temperature | 260°C                        |
| Timing Range        | 1-999 Seconds                |
| Upper Mold Area     | 300 x 600 mm                 |
| Lower Mold Area     | 300 x 600 mm                 |
| Dimensions          | 1100 x 800 x 1700 mm (LxWxH) |
| Net Weight          | 384 kg                       |



JEUX CS-695 spec V-H1M2-030060

## JEUX CS-696

### Pneumatic Flat Press Machine

- Consistent temperature
- Uniform pressure
- Simple to use
- Good for all fabric
- Extremely affordable

#### KEY FEATURES

- Digital temperature controller
- Press travel limiting device
- Vertical press motion
- Preset heating time

| Model name          | JEUX CS-696                |
|---------------------|----------------------------|
| Power Supply        | AC 220 V, 50/60 Hz, 1Φ     |
| Heater Power        | 1000 W                     |
| Maximum Temperature | 260°C                      |
| Timing Range        | 1-999 Seconds              |
| Upper Mold Area     | 206 x 174 mm               |
| Lower Mold Area     | 203 x 152 mm               |
| Dimensions          | 440 x 560 x 910 mm (LxWxH) |
| Net Weight          | 48 kg                      |
| Extra Lower Mold    | 150x50, Ø68 mm             |

Provided as standard



Ø 68 mm



150x50 mm



JEUX CS-696 spec A-D1A1-020015

## JEUX CS-697

### Pneumatic Curve Heat and Cool Press Machine

- Consistent temperature
- Good for all fabric
- Uniform pressure
- PLC controlled
- Simple to use

#### KEY FEATURES

- Both hands push button activation for added safety
- Digital pressure and temperature interlock
- Pneumatic heat /cool changeover
- Selectable foot pedal activation
- Key locking supervisor mode
- Self lock mode
- Dual counters
- Trend display

| Model name          | JEUX CS-697                 |
|---------------------|-----------------------------|
| Power Supply        | AC 220 V, 50/60 Hz, 1Φ      |
| Heater Power        | 600 W                       |
| Compressed Air      | > 0.4 MPa                   |
| Maximum Temperature | 260°C                       |
| Timing Range        | 1-999 Seconds               |
| Upper Mold Area     | 165 x 66 x R80 mm           |
| Lower Mold Area     | 160 x 60 x R70 mm           |
| Dimensions          | 400 x 550 x 1200 mm (LxWxH) |
| Net Weight          | 56 kg                       |



water circulator provided as standard



optional chiller



JEUX CS-697 spec A-P2A1-160060R070

## JEUX CS-698

### Pneumatic Flat Heat and Cool Press Machine

- Color touch screen control panel
- On screen pressure reading
- Consistent temperature
- Extremely affordable
- Uniform pressure
- PLC controlled

#### KEY FEATURES

- Both hands push button activation for added safety
- Digital pressure and temperature interlock
- Unique pneumatic heat /cool changeover
- Selectable foot pedal activation
- Key locking supervisor mode
- Dual time shift mode
- Trend display
- Dual counters

| Model name          | JEUX CS-698                 |
|---------------------|-----------------------------|
| Power Supply        | AC 220 V, 50/60 Hz, 1Φ      |
| Heater Power        | 1200 W                      |
| Compressed Air      | > 0.4 MPa                   |
| Maximum Temperature | 260°C                       |
| Timing Range        | 1-999 Seconds               |
| Upper Mold Area     | 300x100 mm                  |
| Lower Mold Area     | 300x100 mm                  |
| Dimensions          | 420 x 590 x 1150 mm (LxWxH) |
| Net Weight          | 65 kg                       |



water circulator provided as standard



optional chiller



JEUX CS-698 spec A-P2A1-030010



## JEUX CS-700

### Pneumatic Long Curve Press Machine

- Touch screen control panel
- Zones temperature control
- Screen pressure reading
- Consistent temperature
- Uniform Pressure
- PLC controlled

#### KEY FEATURES

- Both hands push button activation for added safety
- Digital pressure and temperature interlock
- Vacuum platform for precise positioning
- Key locking supervisor mode
- Dual time shift mode
- Trend display
- Dual counters

| Model name          | JEUX CS-700                  |
|---------------------|------------------------------|
| Power Supply        | AC 220 V, 50/60 Hz, 1Φ       |
| Heater Power        | 2100 W                       |
| Compressed Air      | > 0.4 MPa                    |
| Maximum Temperature | 260°C                        |
| Timing Range        | 1-999 Seconds                |
| Upper Mold Area     | 1210 x 70 mm                 |
| Lower Mold Area     | 1210 x 50 mm                 |
| Dimensions          | 1270 x 710 x 1400 mm (LxWxH) |
| Net Weight          | 250 kg                       |



JEUX CS-700 spec V-A1A1-121005

## JEUX CS-701

### Pneumatic Flat Press Machine

- Consistent temperature
- Uniform pressure
- Simple to use
- Good for all fabric

#### KEY FEATURES

- Top plate flip down design
- Foot pedal activation
- CoMPact body size
- Preset heating time

| Model name          | JEUX CS-701                  |
|---------------------|------------------------------|
| Power Supply        | AC 220 V, 50/60 Hz, 1 $\Phi$ |
| Heater Power        | 400 W                        |
| Compressed Air      | > 0.4 MPa                    |
| Maximum Temperature | 260°C                        |
| Timing Range        | 1-999 Seconds                |
| Upper Mold Area     | 110 x 110 mm                 |
| Lower Mold Area     | $\Phi$ 100 mm                |
| Dimensions          | 300 x 490 x 500 mm (LxWxH)   |
| Net Weight          | 28 kg                        |



JEUX CS-701 spec A-S1A1-D100

## JEUX CS-702

### Automatic Double Heating Press Machine

- Color touch screen control panel
- 4 heaters independently controllable
- On screen pressure reading
- Consistent temperature
- Extremely affordable
- Uniform pressure
- PLC controlled

#### KEY FEATURES

- Both hands push button activation for added safety
- Digital pressure and temperature interlock
- Upper and lower mold can move independently
- Digitally controlled rotating action
- Selectable foot pedal activation
- Key locking supervisor mode
- Trend display
- Dual counters

| Model name          | JEUX CS-702                  |
|---------------------|------------------------------|
| Power Supply        | AC 220 V, 50/60 Hz, 1⌀       |
| Heater Power        | 2400 W                       |
| Compressed Air      | > 0.4 MPa                    |
| Maximum Temperature | 260°C                        |
| Timing Range        | 1-999 Seconds                |
| Upper Mold Area     | 110 x 200 mm                 |
| Lower Mold Area     | 110 x 200 mm                 |
| Dimensions          | 700 x 1010 x 1500 mm (LxWxH) |
| Net Weight          | 182 kg                       |



JEUX CS-702 spec A-E2A1-011020

## JEUX CS-703

### Pneumatic Flat Press Machine

- Color touch screen control panel
- PLC controlled
- 3 Zones temperature control
- Even temperature, typical 3°C tolerance across bed
- On screen pressure reading
- Vacuum suction lower platform
- Double lower mold for left and right sleeves operation

#### KEY FEATURES

- Both hands push button activation for added safety
- Digital pressure and temperature interlock
- Vacuum platform for precise positioning
- Selectable foot pedal activation
- Key locking supervisor mode
- Dual time shift mode
- Offset lower platform
- Dual counters

| Model name          | JEUX CS-703                 |
|---------------------|-----------------------------|
| Power Supply        | AC 220 V, 50/60 Hz, 1Φ      |
| Heater Power        | 3000 W                      |
| Compressed Air      | > 0.4 MPa                   |
| Maximum Temperature | 260°C                       |
| Timing Range        | 1-999 Seconds               |
| Upper Mold Area     | 900 x 230 mm                |
| Lower Mold Area     | 900 x 70 mm                 |
| Dimensions          | 950 x 740 x 2150 mm (LxWxH) |
| Net Weight          | 282 kg                      |



JEUX CS-701 spec A-S1A1-D100

## JEUX CS-704

### Pneumatic Flat Press Machine

- Consistent temperature
- Uniform pressure
- Simple to use
- Good for all fabric
- Extremely affordable

#### KEY FEATURES

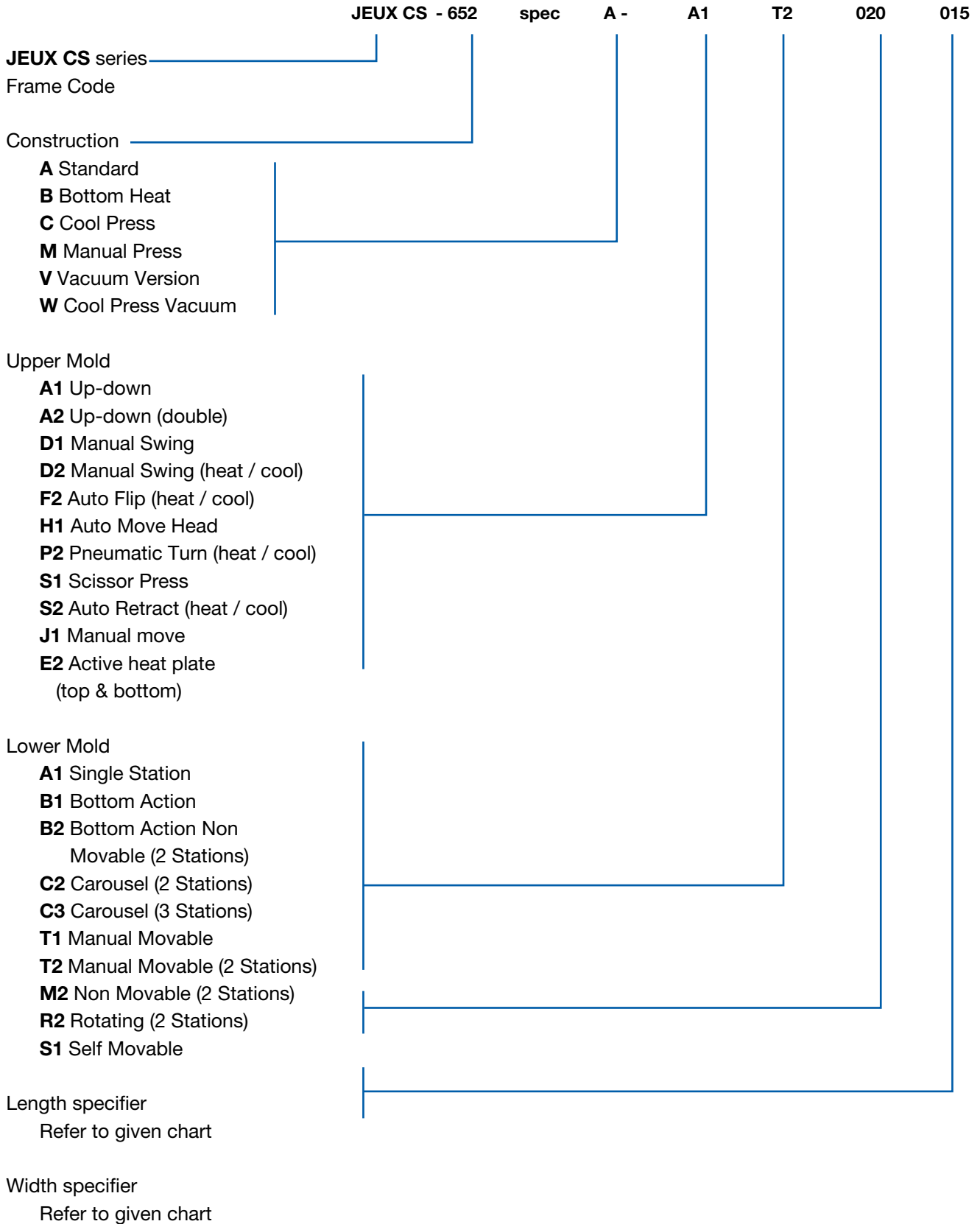
- Both hands push button activation for added safety
- Press travel limiting device
- Optional lighting system
- Foot pedal activation
- Vertical press motion
- Preset heating time
- Safety lever

| Model name          | JEUX CS-704                  |
|---------------------|------------------------------|
| Power Supply        | AC 220 V, 50/60 Hz, 1⌀       |
| Heater Power        | 2500 W                       |
| Compressed Air      | > 0.4 MPa                    |
| Maximum Temperature | 260°C                        |
| Timing Range        | 1-999 Seconds                |
| Upper Mold Area     | 620 x 420 mm                 |
| Lower Mold Area     | 610 x 410 mm                 |
| Dimensions          | 1250 x 810 x 1170 mm (LxWxH) |
| Net Weight          | 195 kg                       |



JEUX CS-704 spec A-A1T2-061041

# SELECTION GUIDE FOR HEAT PRESSING MACHINES



# HEAT PRESSING

| Model no.                          | Lower Mold Area (mm) | Lower Mold Area (inch) | Swing head | Single lower mold | Double lower mold | Economy version | Advance PLC version | Flat press | Curve press | Vacuum version, table included | Heat | Cool | Bottom heat | Cylinder Size $\phi$ (mm) | Lower Mold Pressure (kgf / cm <sup>2</sup> @ 4bar) | Heating Zone no. | Heating Power (W) | Status |
|------------------------------------|----------------------|------------------------|------------|-------------------|-------------------|-----------------|---------------------|------------|-------------|--------------------------------|------|------|-------------|---------------------------|--|------------------|-------------------|--------|
| JEUX CS-651 spec A-A2R2-073073R033 | 80x73xR33            | 3x3xR1.3               |            |                   | •                 |                 | •                   |            | •           |                                | •    |      |             | 63                        | 1.19   | 2                | 1500              |        |
| JEUX CS-651 spec A-A2R2-120073R050 | 120x73xR50           | 5x3xR2                 |            |                   | •                 |                 | •                   |            | •           |                                | •    |      |             | 63                        | 0.73   | 2                | 1500              |        |
| JEUX CS-651 spec A-A2R2-185073R075 | 185x73xR75           | 7x3xR3                 |            |                   | •                 |                 | •                   |            | •           |                                | •    |      |             | 63                        | 0.47   | 2                | 1500              |        |
| JEUX CS-652 spec A-A1A1-020015     | 203x152              | 8x6                    |            | •                 |                   | •               |                     | •          |             |                                | •    |      |             | 63                        | 0.41   | 1                | 1000              |        |
| JEUX CS-652 spec A-A1T2-020015     | 203x152              | 8x6                    |            |                   | •                 | •               |                     | •          |             |                                | •    |      |             | 63                        | 0.41   | 1                | 1000              |        |
| JEUX CS-653 spec A-D1A1-020015     | 203x152              | 8x6                    | •          | •                 |                   |                 | •                   | •          |             |                                | •    |      |             | 63                        | 0.41   | 1                | 1000              |        |
| JEUX CS-653 spec A-D1M2-020015     | 203x152              | 8x6                    | •          |                   | •                 |                 | •                   | •          |             |                                | •    |      |             | 63                        | 0.41   | 1                | 1000              |        |
| JEUX CS-653 spec B-D1M2-010007     | 100x70               | 4x3                    | •          |                   | •                 |                 | •                   | •          |             |                                | •    |      | •           | 63                        | 1.82   | 2                | 1800              |        |
| JEUX CS-653 spec B-D1M2-020015     | 203x152              | 8x6                    | •          |                   | •                 |                 | •                   | •          |             |                                | •    |      | •           | 63                        | 0.41   | 2                | 1800              |        |
| JEUX CS-654 spec A-A1A1-030030     | 300x300              | 12x12                  |            | •                 |                   | •               |                     | •          |             |                                | •    |      |             | 100                       | 0.36   | 1                | 1200              |        |
| JEUX CS-654 spec A-A1T2-030030     | 300x300              | 12x12                  |            |                   | •                 | •               |                     | •          |             |                                | •    |      |             | 100                       | 0.36   | 1                | 1200              |        |
| JEUX CS-654 spec A-A1A1-040040     | 400x400              | 16x16                  |            | •                 |                   | •               |                     | •          |             |                                | •    |      |             | 100                       | 0.20   | 1                | 2600              |        |
| JEUX CS-655 spec A-A1A1-030030     | 300x300              | 12x12                  |            | •                 |                   |                 | •                   | •          |             |                                | •    |      |             | 100                       | 0.36   | 1                | 1500              |        |
| JEUX CS-655 spec A-A1T2-030030     | 300x300              | 12x12                  |            |                   | •                 |                 | •                   | •          |             |                                | •    |      |             | 100                       | 0.36   | 1                | 1500              |        |
| JEUX CS-655 spec B-A1A1-030030     | 300x300              | 12x12                  |            | •                 |                   |                 | •                   | •          |             |                                | •    |      | •           | 100                       | 0.36   | 2                | 3000              |        |
| JEUX CS-655 spec V-A1A1-030030     | 300x300              | 12x12                  |            | •                 |                   |                 | •                   | •          |             | •                              | •    |      |             | 100                       | 0.36   | 1                | 1500              |        |
| JEUX CS-655 spec A-A1A1-040040     | 400x400              | 16x16                  |            | •                 |                   |                 | •                   | •          |             |                                | •    |      |             | 100                       | 0.20   | 1                | 2600              |        |
| JEUX CS-655 spec V-A1A1-040040     | 400x400              | 16x16                  |            | •                 |                   |                 | •                   | •          |             | •                              | •    |      |             | 100                       | 0.20   | 1                | 2600              |        |
| JEUX CS-658 spec A-D2A1-038008     | 380x80               | 15x3                   | •          | •                 |                   |                 | •                   | •          |             |                                | •    | •    |             | 63                        | 0.42   | 1                | 1000              |        |
| JEUX CS-661 spec A-F2A1-030010     | 300x95               | 12x4                   |            | •                 |                   |                 | •                   | •          |             |                                | •    | •    |             | 80                        | 0.72   | 1                | 1000              |        |
| JEUX CS-662 spec A-A1A1-120050     | 1200x500             | 48x20                  |            | •                 |                   |                 | •                   | •          |             |                                | •    |      |             | 200                       | 0.21   | 3                | 6000              |        |
| JEUX CS-662 spec V-A1A1-120050     | 1200x500             | 48x20                  |            | •                 |                   |                 | •                   | •          |             | •                              | •    |      |             | 200                       | 0.21   | 3                | 6000              |        |
| JEUX CS-662 spec W-A1A1-120050     | 1200x500             | 48x20                  |            | •                 |                   |                 | •                   | •          |             | •                              |      | •    |             | 200                       | 0.21   |                  |                   |        |
| JEUX CS-662 spec C-A1A1-120050     | 1200x500             | 48x20                  |            | •                 |                   |                 | •                   | •          |             |                                | •    |      | •           | 200                       | 0.21   |                  |                   |        |
| JEUX CS-663 spec A-D2A1-130040R083 | 130x40xR83           | 5x1.5xR3.3             | •          | •                 |                   |                 | •                   |            | •           |                                | •    | •    |             | 63                        | 2.45   | 1                | 600               |        |
| JEUX CS-664 spec A-D1A1-028016     | 280x160              | 11x6.5                 | •          | •                 |                   | •               |                     | •          |             |                                | •    |      |             | 63                        | 0.28   | 1                | 1500              |        |
| JEUX CS-665 spec A-A1A1-060012     | 600x120              | 24x5                   |            | •                 |                   |                 | •                   | •          |             |                                | •    |      |             | 100                       | 0.45   | 1                | 1600              |        |
| JEUX CS-665 spec V-A1A1-060012     | 600x120              | 24x5                   |            | •                 |                   |                 | •                   | •          |             | •                              | •    |      |             | 100                       | 0.45   | 1                | 1600              |        |
| JEUX CS-665 spec B-A1A1-060012     | 600x120              | 24x5                   |            | •                 |                   |                 | •                   | •          |             |                                | •    |      | •           | 100                       | 0.45   | 2                | 3200              |        |
| JEUX CS-666 spec A-A1A1-060012     | 600x120              | 24x5                   |            | •                 |                   | •               |                     | •          |             |                                | •    |      |             | 100                       | 0.45   | 1                | 1600              |        |
| JEUX CS-667 spec A-A1A1-300095R191 | 300x95xR191          | 12x4xR7.5              |            | •                 |                   |                 | •                   |            | •           |                                | •    |      |             | 80                        | 0.72   | 1                | 1200              |        |
| JEUX CS-667 spec V-A1A1-300095R191 | 300x95xR191          | 12x4xR7.5              |            | •                 |                   |                 | •                   |            | •           | •                              | •    |      |             | 80                        | 0.72   | 1                | 1200              |        |
| JEUX CS-668 spec A-A1A1-300095R191 | 300x95xR191          | 12x4xR7.5              |            | •                 |                   | •               |                     | •          |             |                                | •    |      |             | 80                        | 0.72   | 1                | 1200              |        |
| JEUX CS-668 spec V-A1A1-300095R191 | 300x95xR191          | 12x4xR7.5              |            | •                 |                   | •               |                     | •          | •           | •                              | •    |      |             | 80                        | 0.72   | 1                | 1200              |        |
| JEUX CS-669 spec A-A1A1-040040     | 400x400              | 16x16                  |            | •                 |                   |                 | •                   | •          |             |                                | •    |      |             | 100                       | 0.20   | 1                | 2600              |        |
| JEUX CS-669 spec V-A1A1-040040     | 400x400              | 16x16                  |            | •                 |                   |                 | •                   | •          |             | •                              | •    |      |             | 100                       | 0.20   | 1                | 2600              |        |
| JEUX CS-671 spec M-D1A1-020015     | 203x152              | 8x6                    | •          | •                 |                   |                 | •                   | •          |             |                                | •    |      |             | -                         |  | 1                | 1000              |        |
| JEUX CS-672 spec A-D1A1-030030     | 300x300              | 12x12                  | •          | •                 |                   |                 | •                   | •          |             |                                | •    |      |             | 80                        | 0.23   | 1                | 1500              |        |
| JEUX CS-672 spec A-D1M2-030030     | 300x300              | 12x12                  | •          |                   | •                 |                 | •                   | •          |             |                                | •    |      |             | 80                        | 0.23   | 1                | 1500              |        |
| JEUX CS-673 spec A-S1A1-028013     | 280x130              | 11x5                   |            | •                 |                   |                 | •                   | •          |             |                                | •    |      |             | 63                        | 0.35   | 1                | 1300              |        |
| JEUX CS-674 spec A-D2A1-020015     | 203x152              | 8x6                    | •          | •                 |                   | •               |                     | •          |             |                                | •    | •    |             | 63                        | 0.41   | 1                | 1000              |        |

| Model no.                          | Lower Mold Area (mm) | Lower Mold Area (inch) | Swing head | Single lower mold | Double lower mold | Economy version | Advance PLC version | Flat press | Curve press | Vacuum version, table included | Heat | Cool | Bottom heat | Cylinder Size $\phi$ (mm) | Lower Mold Pressure (kgf / cm <sup>2</sup> @ 4bar) | Heating Zone no. | Heating Power (W) | Status |
|------------------------------------|----------------------|------------------------|------------|-------------------|-------------------|-----------------|---------------------|------------|-------------|--------------------------------|------|------|-------------|---------------------------|--|------------------|-------------------|--------|
| JEUX CS-675 spec A-A1A1-050050     | 500x500              | 20x20                  |            | •                 |                   | •               | •                   | •          |             |                                | •    |      |             | 125                       | 0.20   | 1                | 3500              |        |
| JEUX CS-676 spec A-A1A1-120080     | 1200x800             | 48x32                  |            | •                 |                   |                 | •                   | •          |             |                                | •    |      |             | 250                       | 0.21   | 6                | 12000             |        |
| JEUX CS-677 spec B-A1A1-032009     | 320x90               | 13x3.5                 |            | •                 |                   |                 | •                   | •          |             |                                | •    |      | •           | 63                        | 0.44   | 2                | 2000              |        |
| JEUX CS-678 spec A-D1B2-050050     | 500x500              | 20x20                  | •          |                   | •                 |                 | •                   | •          |             |                                | •    |      |             | 224                       | 4.00   | 1                | 3500              |        |
| JEUX CS-679 spec A-A1A1-011011     | 110x110              | 4.5x4.5                |            | •                 |                   |                 | •                   | •          |             |                                | •    |      |             | 63                        | 1.05   | 1                | 600               |        |
| JEUX CS-680 spec A-D1A1-030030     | 300x300              | 12x12                  | •          | •                 |                   |                 | •                   | •          |             |                                | •    |      |             | 80                        | 0.23   | 1                | 1500              |        |
| JEUX CS-680 spec A-D1M2-030030     | 300x300              | 12x12                  | •          |                   | •                 |                 | •                   | •          |             |                                | •    |      |             | 80                        | 0.23   | 1                | 1500              |        |
| JEUX CS-681 spec V-F2A1-100010     | 1000x100             | 40x4                   |            | •                 |                   |                 | •                   | •          |             | •                              | •    | •    |             | 125                       | 0.50   | 1                | 1800              |        |
| JEUX CS-682 spec V-S2B1-100050     | 1000x500             | 40x20                  |            | •                 |                   |                 | •                   | •          |             | •                              | •    | •    |             | 160                       | 3.28   | 3                | 7500              |        |
| JEUX CS-686 spec A-F2A1-030030     | 300x300              | 12x12                  |            | •                 |                   |                 | •                   | •          |             |                                | •    | •    |             | 100                       | 0.36   | 1                | 2400              |        |
| JEUX CS-687 spec V-F2A1-060030     | 600x300              | 24x12                  |            | •                 |                   |                 | •                   | •          |             | •                              | •    | •    |             | 160                       | 0.44   | 1                | 3200              |        |
| JEUX CS-688 spec A-A1A1-030010     | 300x100              | 12x4                   |            | •                 |                   | •               |                     | •          |             |                                | •    |      |             | 50                        | 0.26   | 1                | 900               |        |
| JEUX CS-693 spec A-A1A1-078038     | 780x380              | 30x15                  |            | •                 |                   |                 | •                   | •          |             |                                | •    |      |             | 160                       | 0.28   | 3                | 3000              |        |
| JEUX CS-693 spec V-A1A1-078038     | 780x380              | 30x15                  |            | •                 |                   |                 | •                   | •          |             | •                              | •    |      |             | 160                       | 0.28   | 3                | 3000              |        |
| JEUX CS-694 spec A-A1A1-078038     | 780x380              | 30x15                  |            | •                 |                   | •               |                     | •          |             |                                | •    |      |             | 160                       | 0.28   | 1                | 3600              |        |
| JEUX CS-695 spec V-H1M2-030060     | 300x600              | 12x24                  |            |                   | •                 |                 | •                   | •          |             | •                              | •    |      |             | 100                       | 0.18   | 2                | 2400              |        |
| JEUX CS-696 spec A-D1A1-020015     | 203x152              | 8x6                    | •          | •                 |                   | •               |                     | •          |             |                                | •    |      |             | 63                        | 0.41   | 1                | 1000              |        |
| JEUX CS-697 spec A-P2A1-160060R070 | 160x60xR70           | 6.5x2.5xR3             |            | •                 |                   |                 | •                   |            | •           |                                | •    | •    |             | 80                        | 2.14   | 1                | 600               |        |
| JEUX CS-698 spec A-P2A1-030010     | 300x100              | 12x4                   |            | •                 |                   |                 | •                   | •          |             |                                | •    | •    |             | 80                        | 0.68   | 1                | 1200              |        |
| JEUX CS-700 spec V-A1A1-121005     | 1210x50              | 48x2                   |            | •                 |                   |                 | •                   |            | •           | •                              | •    |      |             | 100                       | 0.53   | 3                | 2100              |        |
| JEUX CS-701 spec A-S1A1-D70        | D70                  | D3                     |            | •                 |                   | •               |                     | •          |             |                                | •    |      |             | 50                        | 1.73   | 1                | 400               |        |
| JEUX CS-702 spec A-E2P2-011020     | 110x200              | 4.5x8                  |            | •                 |                   |                 | •                   | •          |             |                                | •    |      |             | 80                        | 0.47   | 4                | 2400              |        |
| JEUX CS-703 spec V-A1M2-090007     | 900x70               | 36x3                   |            |                   | •                 |                 | •                   | •          |             | •                              | •    |      |             | 125                       | 0.40   | 3                | 3000              |        |
| JEUX CS-704 spec A-A1T2-061041     | 610x410              | 24x16                  |            |                   | •                 | •               |                     | •          |             |                                | •    |      |             | 125                       | 0.2  | 1                | 2500              |        |





**TESTING MACHINES**

## JEUX HT-309

### Hydrostatic Tester

- Consistent pressure
- Simple to use
- Good for all fabric

### KEY FEATURES

- Adjustable in / out water flow rate
- Quick release hand clamp
- Direct pressure read out
- Recycling water supply
- Slant test platform
- Hand free testing
- Digital timer

| Model name        | JEUX HT-309                  |
|-------------------|------------------------------|
| Power Supply      | AC 220 V, 50/60 Hz, 1Φ       |
| Power Consumption | 500 W                        |
| Maximum Pressure  | 6 PSI                        |
| Timing Range      | 1-999 Seconds                |
| Dimensions        | 1000 x 500 x 1350 mm (LxWxH) |
| Net Weight        | 40 kg                        |



JEUX HT-309

## JEUX HT-360

### Hydrostatic Tester

- Color touch screen control panel
- Consistent pressure
- Simple to use
- Good for all fabric
- PLC controlled
- Multi-unit display (bar, psi, kgf, mm h<sub>2</sub>O)
- Trend display

### KEY FEATURES

- Adjustable in / out water flow rate
- Water temperature high alarm
- Quick release hand clamp
- Direct pressure read out
- Recycling water supply
- Slant test platform
- Hand free testing
- Digital timer

| Model name       | JEUX HT-360                  |
|------------------|------------------------------|
| Power Supply     | AC 220 V, 50/60 Hz, 1Φ       |
| Heater Power     | 370 W                        |
| Maximum Pressure | 30 psi                       |
| Timing Range     | 1-999 Seconds                |
| Dimensions       | 1000 x 500 x 1350 mm (LxWxH) |
| Net Weight       | 65 kg                        |



JEUX HT-360

## JEUX TD-100

### Portable Bonding Press Station

- Modular design
- Controller and heating plate
- Consistent temperature
- Uniform temperature
- Simple to use

#### KEY FEATURES

- Ergonomic handle design
- Heating plate can positioned vertically
- Digital temperature controller

| Model name          | JEUX TD-100                |
|---------------------|----------------------------|
| Power Supply        | AC 220 V, 50/60 Hz, 1Ø     |
| Heater Power        | 100 W                      |
| Maximum Temperature | 260°C                      |
| Dimensions          | 330 x 160 x 230 mm (LxWxH) |
| Net Weight          | 6 kg                       |



JEUX TD-100

## JEUX TD-200

### Portable Roller Spotting Station

- Modular design
- Controller and heating roller
- Consistent temperature
- Uniform temperature
- Simple to use

#### KEY FEATURES

- Heating roller can suspended placed
- Digital temperature controller
- CoMPact body size

| Model name          | JEUX TD-200                |
|---------------------|----------------------------|
| Power Supply        | AC 220 V, 50/60 Hz, 1Ø     |
| Heater Power        | 200 W                      |
| Maximum Temperature | 260°C                      |
| Roller Diameter     | 30 mm                      |
| Dimensions          | 170 x 120 x 260 mm (LxWxH) |
| Net Weight          | 2 kg                       |



JEUX TD-200

## OPTIONAL ITEMS

---

### NOZZLES




### ROLLERS



### TAPES





Juki Italia S.p.A.  
Via Bergamo 4 • 20020 Lainate (MI)  
Tel: 02 937579.1  
[www.juki.it](http://www.juki.it) • e-mail: [info@juki.it](mailto:info@juki.it)